



TOWER 3

**TURN ON
THE NIGHTS
WITH VIEWS
FOR DAYS**





ANNOUNCING W RESIDENCES AT DUBAI HARBOUR TOWER 3

Experience upscale urban living in a waterfront community with breathtaking views of the Dubai Marina, Palm Jumeirah and Bluewaters Island.

Choose from over 400 impeccably appointed homes spread across an immaculately designed three-tower complex with high-end dining, shopping and hospitality experiences.

Enjoy an exceptional lifestyle with a wide range of carefully curated amenities in the beating heart of the region's largest recreational marina.





AN ELEVATED STYLE OF MARINA LUXURY





LOCATION

Experience unparalleled luxury at W Residences, nestled in Dubai Harbour's stunning waterfront community.

Admire panoramic views of the iconic Palm Jumeirah, Dubai Marina, Bluewaters Island, and the endless calm

waters of the Arabian Gulf. For consummate pleasure-seekers, Dubai Harbour presents every opportunity for an active lifestyle augmented by luxurious living amenities and access to high-end dining, shopping and holiday-making experiences.



TAKE IN
THOSE COOL
OCEAN VIBES







THE BUILDING

With LEED Gold-certified design that is inspired by the majesty of its surroundings, W Residences at Dubai Harbour provides a creative, stimulating environment for both residents and visitors alike.

Designed to connect three horizontal lines – the promenade, the harbour and the sky – that reflect the unique seafront and urban landscape, the three-tower complex also features striking diagonal lines that allow the buildings to ‘touch’ at points where water and sky meet.

This awe-inspiring backdrop is complemented by the shared experiences that form part of the complex in the form of the world-beating amenities and services that are layered into the podium level.



A LIFE ENHANCED BY STYLE





THE RESIDENCES

The wide range of floor plan options in W Residences - Tower 3 allows owners to buy a suitable layout for their needs.

From well-appointed single-bedroom apartments to luxurious five-bedroom rooftop penthouses that feature pools with incomparable views, W Residences at Dubai Harbour also contains a range of two, three, and four-bedroom duplex apartments in the tower's central section.

Rest assured; an exceptional living experience awaits the owner of any residence unit in the building with smart home features as standard and immaculate finishes that complement a warm, simple interior design.

Each home also contains several kitchen components – including a washer-dryer, cooking range and hood – provided free of charge.



WHERE SEA AND SUN SHINE



SPACES FOR GATHERINGS

The Residence Lounge is a platform for engaging and creative gatherings. A practical and inspiring co-working space by day, the Lounge transforms into a stylish social venue by night. Over 170 square meters in size, this area contains flexible and immersive, tech-enabled spaces that can be customized to fit entertainment or corporate needs.



YOGA AND PILATES STUDIOS

Residents enjoy exclusive access to premium wellness facilities in the shape of purpose-built studios dedicated to yoga and pilates. These facilities enjoy exceptional views of the surrounding cityscape while providing the perfect location to indulge in meditation and exercise.





WELLNESS SPA

The Residences also includes a spectacular wellness spa and fitness centre, designed exclusively for residents and located on the podium level. Featuring high-end services and premium relaxation and recovery amenities, this facility is dedicated to enhancing residents' wellbeing.





SCREENING ROOM

Residents can enjoy their own cinema. An exclusive big screen and high-end sound system are available for owners and their guests to book.



WELLFIT

Located on the podium level, Wellfit's flagship 43,000-square-foot wellness center is the largest in the entire Dubai Marina area. It offers a variety of workout areas and studios and state-of-the-art fitness equipment.



FOOD AND BEVERAGE

The top-tier restaurant and refreshment facilities at W Residences at Dubai Harbour make your lifestyle destination one of the most popular parts of the up-and-coming harbour district.

Owners can also enjoy a host of carefully curated food and beverage outlets along the ground floor level, incorporating fine dining culture at its best.



SPECTACULAR INFINITY POOL

At over 200 meters long, the WET Infinity Pool on the podium level is one of the longest in the city, complemented by a spacious pool deck and barbecue area.

GAMES ROOM



Located on the podium level, a Games Room offers a full range of classic indoor activities, from pool tables and table tennis to a Sports Simulator room featuring specialized software and a big screen for residents to play a huge variety of e-sports.

SOUND SUITE

A private music recording studio, the Sound Suite includes a lounge, live room and main mixing room incorporating the latest high-tech equipment.

A new way for bands, DJs and musicians to get creative, this space allows artists the freedom to collaborate in an awe-inspiring location.



KIDDY CLUB



Expertly trained staff organize a wide range of creative and fun programs in the spacious kids' club at the residences. Children can look forward to fulfilling and entertaining ways to spend their time. With colourful interiors as the backdrop of ever-changing activities on offer, the space allows parents to rest easy knowing their children are in safe hands.



AMENITIES

- Panoramic views of Dubai Harbour, Bluewaters Island, The Palm Jumeirah and Dubai Marina from every apartment
- Smart home features as standard in each residence

- Residents-only 200m the WET Infinity Pool on the podium level
- Whatever/Whenever© 24-hour concierge service and valet parking
- Electric vehicle charging, efficient water and energy usage and responsible waste management practices

- Access to 170sqm Residence Lounge
- Screening Room, Sound Suite and Games Room
- Meeting and co-working spaces and guest suites for visiting friends or relatives

- Residents-only FITgym, wellness spa, yoga and pilates studio and kids club
- Residents can also enjoy the 43,000 sqft Wellfit fitness centre
- Easy access to fine dining restaurants at ground floor level

- Easy access to the largest marina in the Gulf
- Easy access to Dubai Harbour Yacht Club



SLIP INTO COMFORT







WHATEVER/ WHENEVER©

Residence owners have an unparalleled range of services, alongside the world-class amenities on offer. These include the signature Whatever/Whenever© 24-hour concierge service, valet parking, high-

speed internet access and much more. Living at W Residences at Dubai Harbour means being part of an exclusive group of creative fellow residents, with a wide range of social and networking facilities allowing for easy connections.

BENEFITS WITH ONVIA An Exclusive Platform for Residence Owners

The Residences offer a lifestyle experience that goes well beyond what you've ever imagined. Rooted in the fine art of hospitality, ONVIA provides a unique point of view on residential living, amenities, experiences, and more – each one designed to take you beyond your imagination.

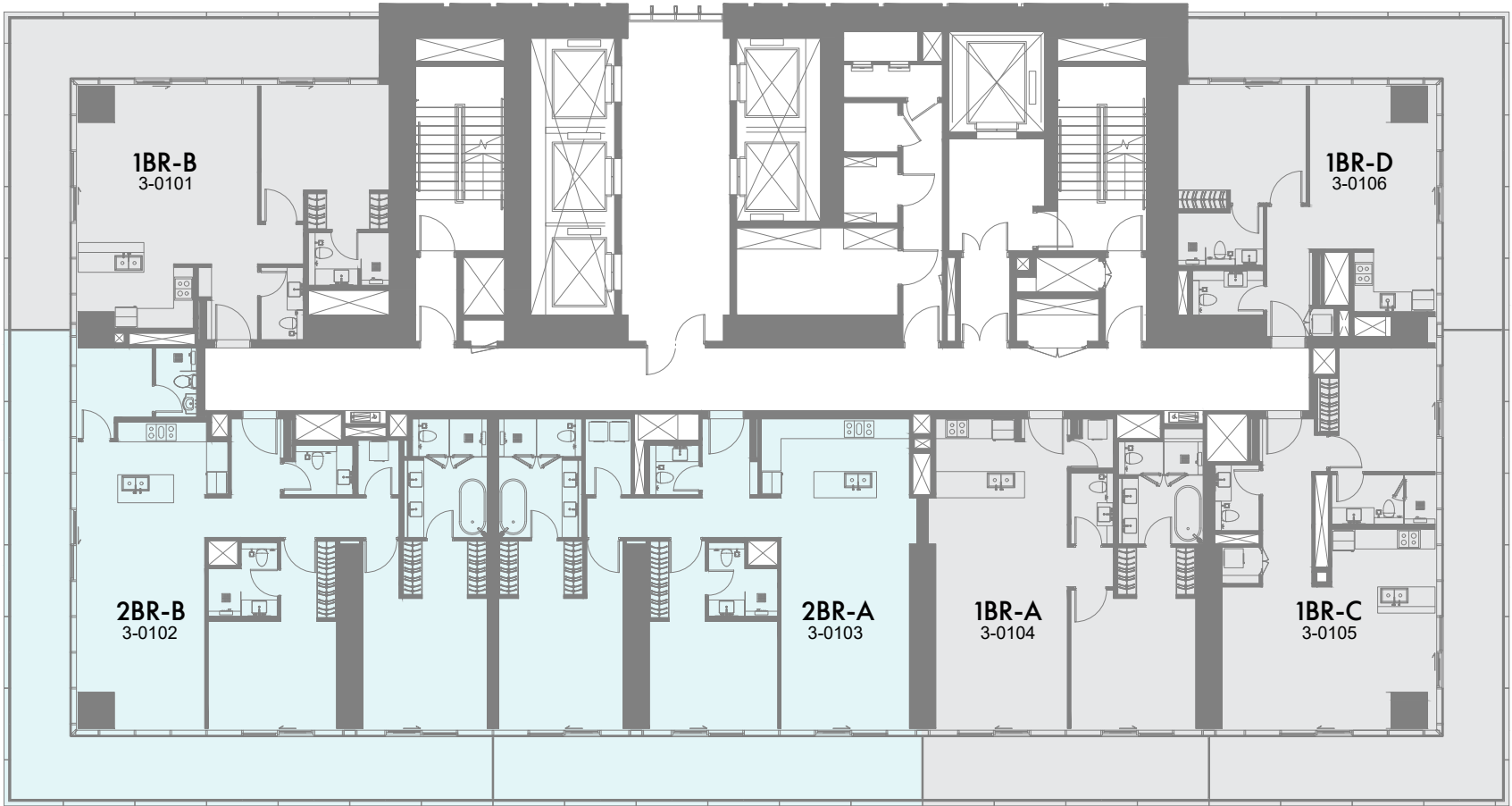
- Elevated Marriott Bonvoy loyalty status for Residence Owners
- Preferred Residence Owner rates for select hotels within the global Marriott Bonvoy portfolio
- Special offerings and preferred access on voyages with The Ritz-Carlton Yacht Collection
- Exclusive offers on culinary experiences when at home and within the local community
- A focus on wellness, including spa and treatment offerings
- Access to a world-class accredited concierge service



FLOOR PLANS

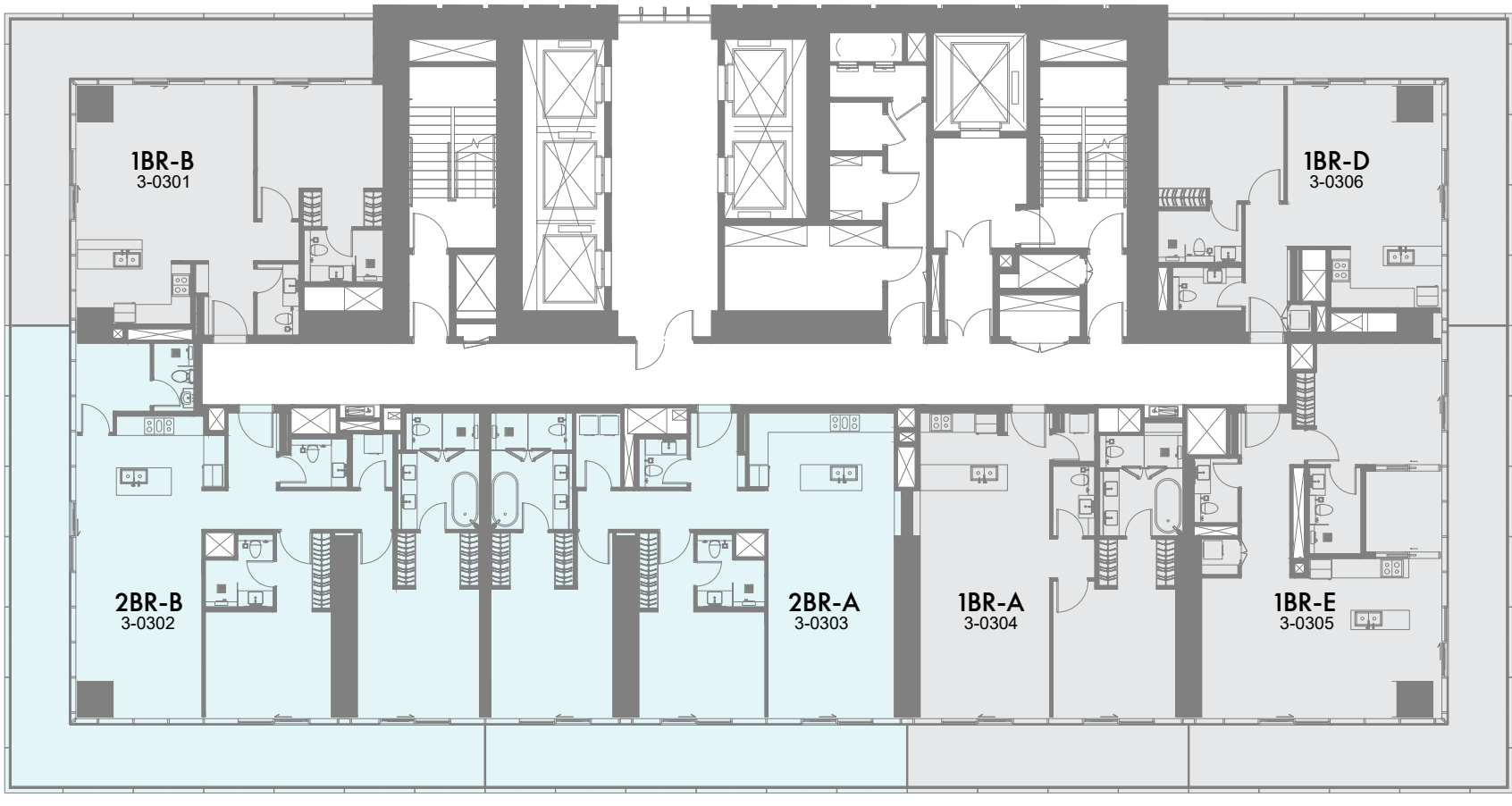


1st & 2nd Floor Plan



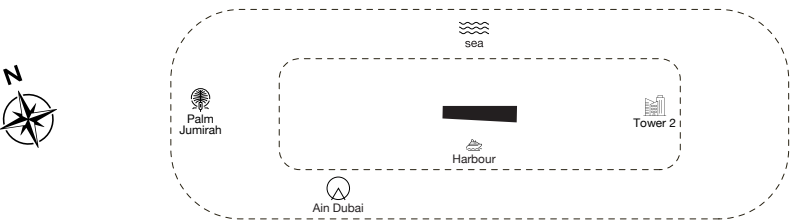
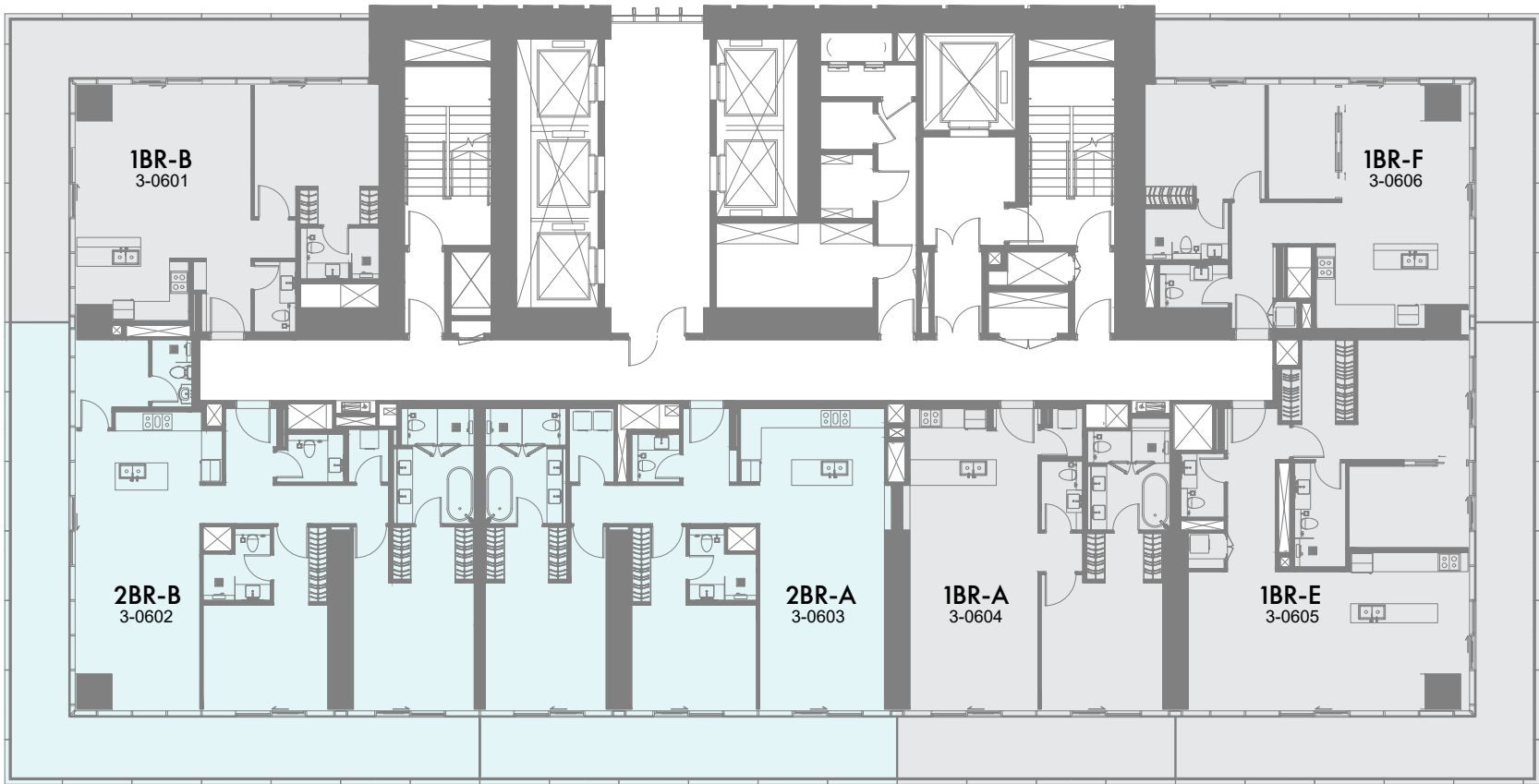
1-Measurements are indicative 'finish to finish' in Metric & Imperial excluding construction tolerance. 2-Plot/unit dimensions may vary from brochure, and unit types/plans may exist as mirrored versions; 3-All images used are for illustrative purposes only. 4-Unless stated otherwise, all fittings and interior decorative items shown are for illustrative purposes only. 5-The developer reserves the right to make alterations, at its absolute discretion, without any liability whatsoever up to the final 'as built' status.

3rd to 5th Floor Plan



1-Measurements are indicative 'finish to finish' in Metric & Imperial excluding construction tolerance. 2-Plot/unit dimensions may vary from brochure, and unit types/plans may exist as mirrored versions; 3-All images used are for illustrative purposes only. 4-Unless stated otherwise, all fittings and interior decorative items shown are for illustrative purposes only. 5-The developer reserves the right to make alterations, at its absolute discretion, without any liability whatsoever up to the final 'as built' status.

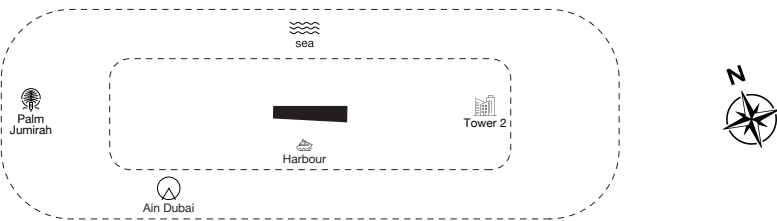
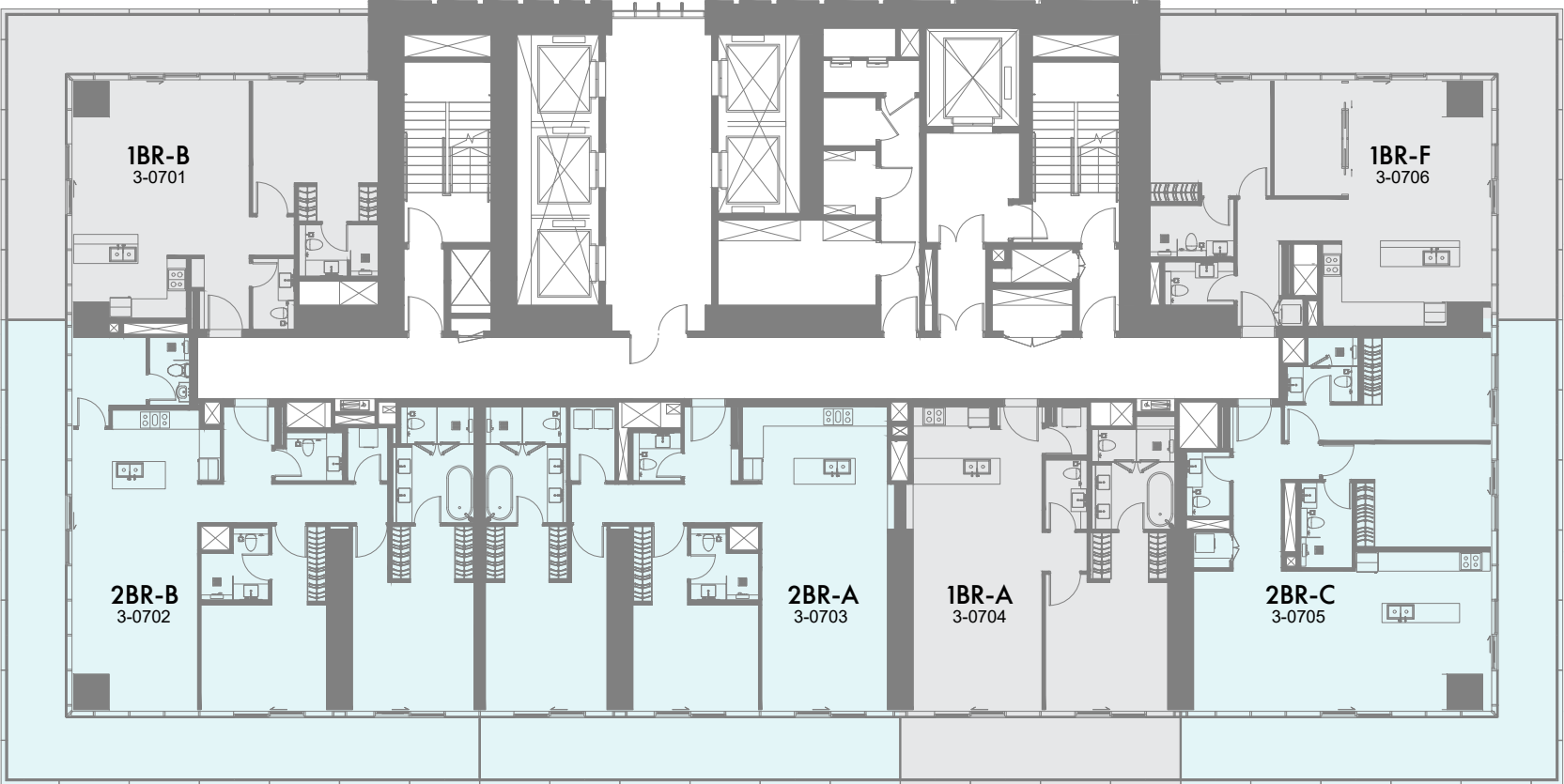
6th Floor Plan



1 Bedroom 2 Bedrooms 2 Bedrooms Duplex 3 Bedrooms 3 Bedrooms Duplex 4 Bedrooms 4 Bedrooms Duplex 5 Bedrooms Penthouse 5 Bedrooms Presidential suite

1-Measurements are indicative 'finish to finish' in Metric & Imperial excluding construction tolerance. 2-Plot/unit dimensions may vary from brochure, and unit types/plans may exist as mirrored versions; 3-All images used are for illustrative purposes only. 4-Unless stated otherwise, all fittings and interior decorative items shown are for illustrative purposes only. 5-The developer reserves the right to make alterations, at its absolute discretion, without any liability whatsoever up to the final 'as built' status.

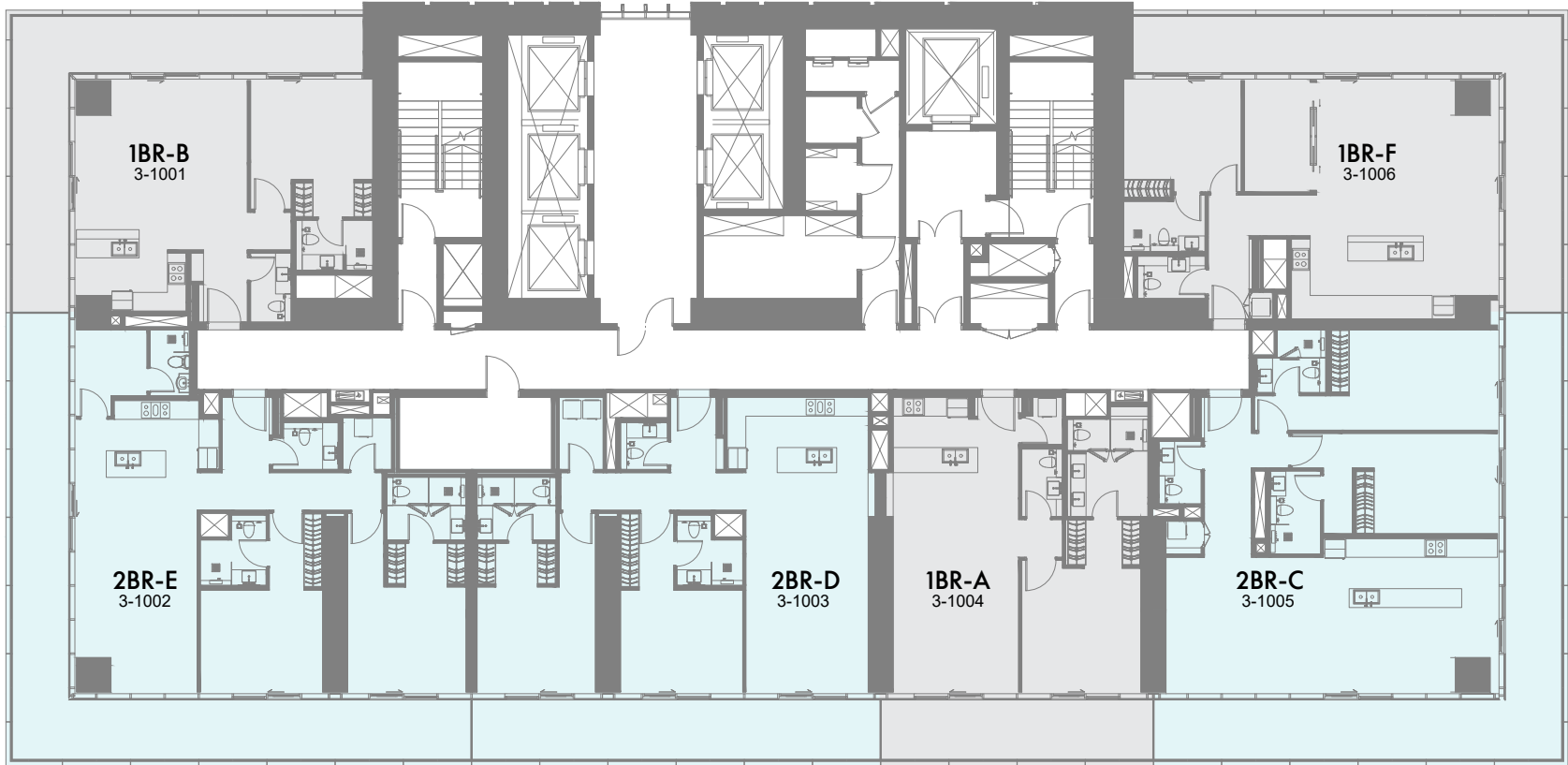
7th to 9th Floor Plan



1 Bedroom 2 Bedrooms 2 Bedrooms Duplex 3 Bedrooms 3 Bedrooms Duplex 4 Bedrooms 4 Bedrooms Duplex 5 Bedrooms Penthouse 5 Bedrooms Presidential suite

1-Measurements are indicative 'finish to finish' in Metric & Imperial excluding construction tolerance. 2-Plot/unit dimensions may vary from brochure, and unit types/plans may exist as mirrored versions; 3-All images used are for illustrative purposes only. 4-Unless stated otherwise, all fittings and interior decorative items shown are for illustrative purposes only. 5-The developer reserves the right to make alterations, at its absolute discretion, without any liability whatsoever up to the final 'as built' status.

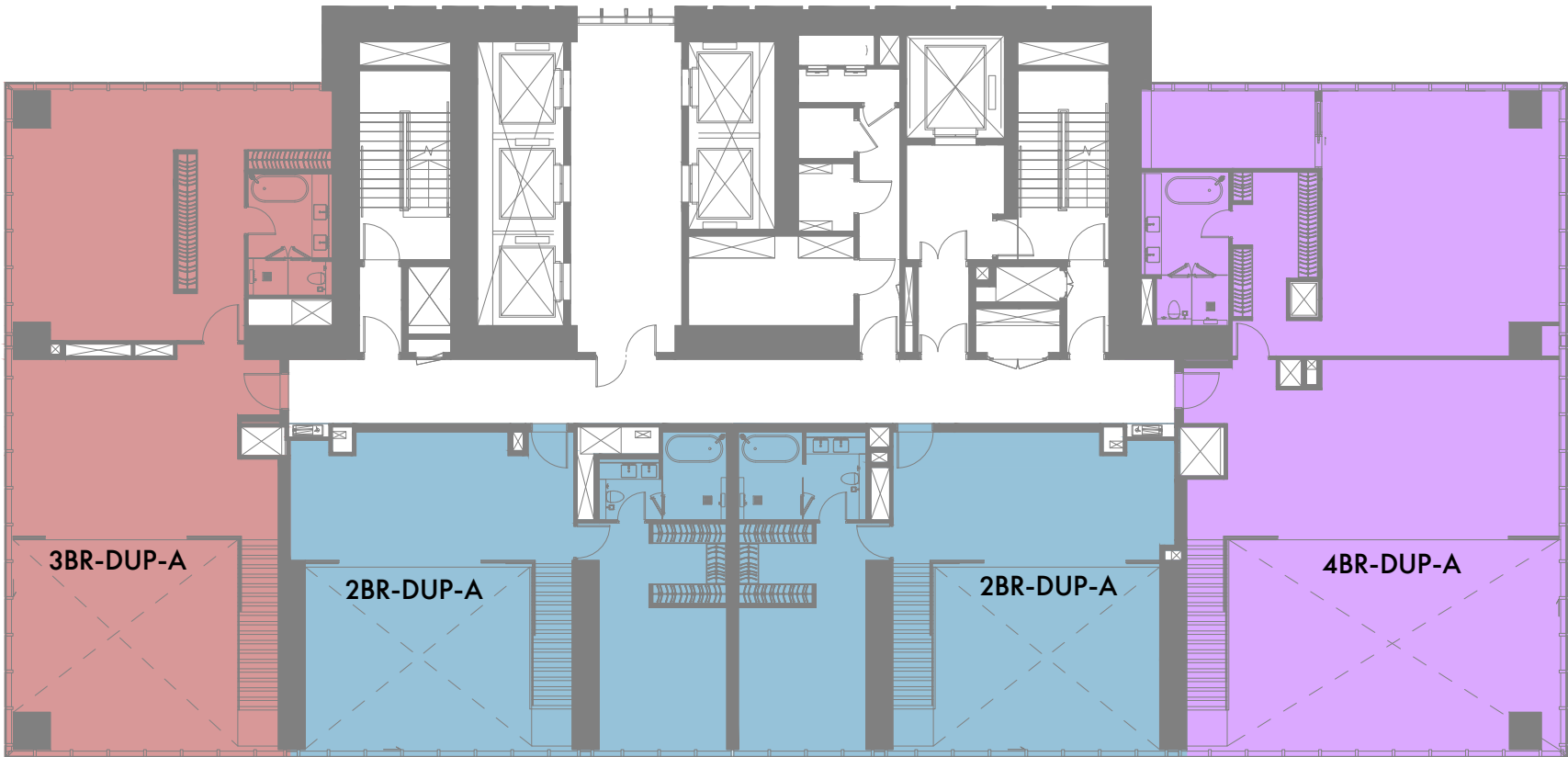
10th Floor Plan



1-Measurements are indicative 'finish to finish' in Metric & Imperial excluding construction tolerance. 2-Plot/unit dimensions may vary from brochure, and unit types/plans may exist as mirrored versions; 3-All images used are for illustrative purposes only. 4-Unless stated otherwise, all fittings and interior decorative items shown are for illustrative purposes only. 5-The developer reserves the right to make alterations, at its absolute discretion, without any liability whatsoever up to the final 'as built' status.



11th Floor Plan (Duplex)



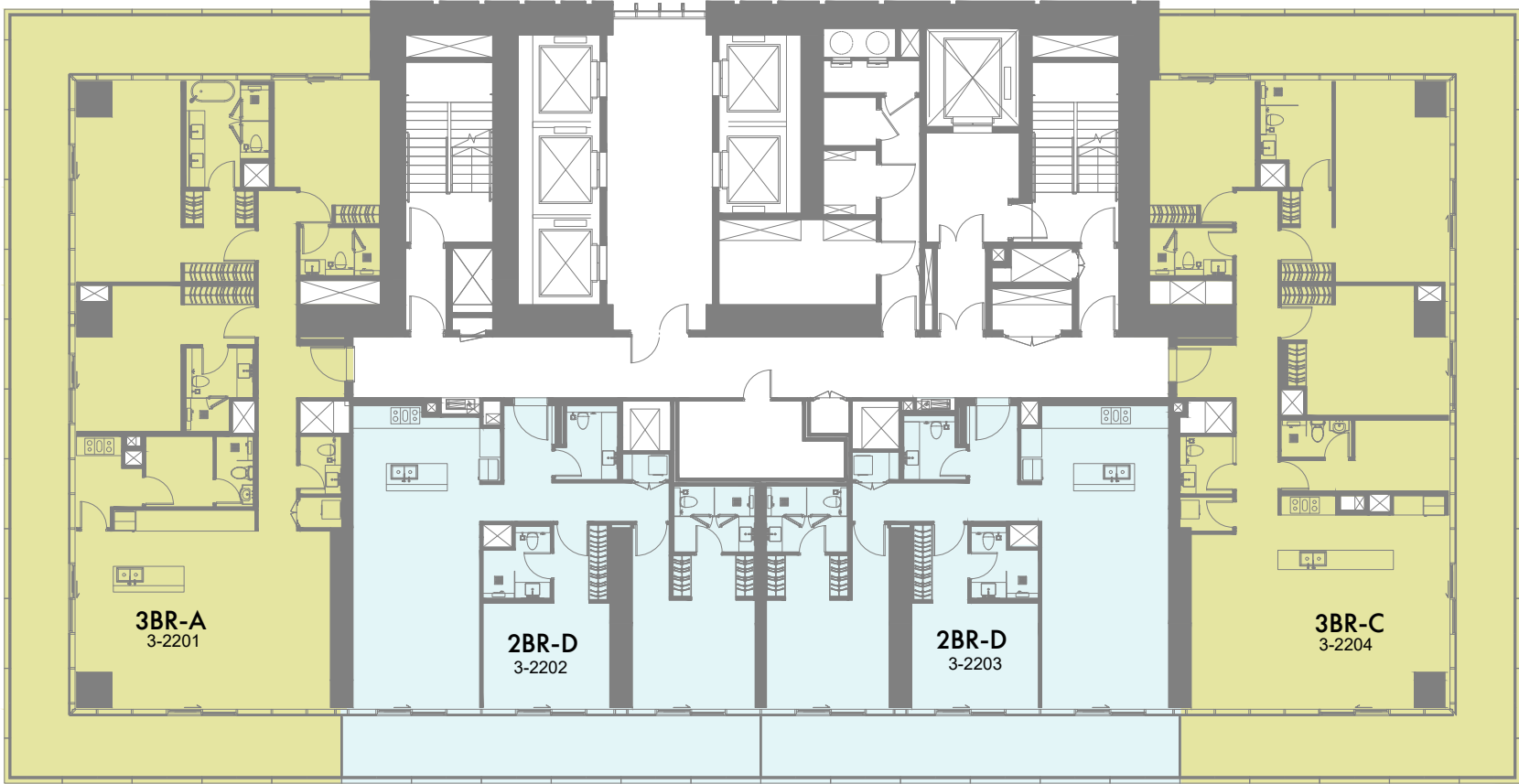
1-Measurements are indicative 'finish to finish' in Metric & Imperial excluding construction tolerance. 2-Plot/unit dimensions may vary from brochure, and unit types/plans may exist as mirrored versions; 3-All images used are for illustrative purposes only. 4-Unless stated otherwise, all fittings and interior decorative items shown are for illustrative purposes only. 5-The developer reserves the right to make alterations, at its absolute discretion, without any liability whatsoever up to the final 'as built' status.



1-Measurements are indicative 'finish to finish' in Metric & Imperial excluding construction tolerance. 2-Plot/unit dimensions may vary from brochure, and unit types/plans may exist as mirrored versions; 3-All images used are for illustrative purposes only. 4-Unless stated otherwise, all fittings and interior decorative items shown are for illustrative purposes only. 5-The developer reserves the right to make alterations, at its absolute discretion, without any liability whatsoever up to the final 'as built' status.

14th to 21st Floor Plan

22nd Floor Plan



1-Measurements are indicative 'finish to finish' in Metric & Imperial excluding construction tolerance. 2-Plot/unit dimensions may vary from brochure, and unit types/plans may exist as mirrored versions; 3-All images used are for illustrative purposes only. 4-Unless stated otherwise, all fittings and interior decorative items shown are for illustrative purposes only. 5-The developer reserves the right to make alterations, at its absolute discretion, without any liability whatsoever up to the final 'as built' status.

1-Measurements are indicative 'finish to finish' in Metric & Imperial excluding construction tolerance. 2-Plot/unit dimensions may vary from brochure, and unit types/plans may exist as mirrored versions; 3-All images used are for illustrative purposes only. 4-Unless stated otherwise, all fittings and interior decorative items shown are for illustrative purposes only. 5-The developer reserves the right to make alterations, at its absolute discretion, without any liability whatsoever up to the final 'as built' status.

23rd to 27th Floor Plan



1-Measurements are indicative 'finish to finish' in Metric & Imperial excluding construction tolerance. 2-Plot/unit dimensions may vary from brochure, and unit types/plans may exist as mirrored versions; 3-All images used are for illustrative purposes only. 4-Unless stated otherwise, all fittings and interior decorative items shown are for illustrative purposes only. 5-The developer reserves the right to make alterations, at its absolute discretion, without any liability whatsoever up to the final 'as built' status.

29th to 31st Floor Plan



1-Measurements are indicative 'finish to finish' in Metric & Imperial excluding construction tolerance. 2-Plot/unit dimensions may vary from brochure, and unit types/plans may exist as mirrored versions; 3-All images used are for illustrative purposes only. 4-Unless stated otherwise, all fittings and interior decorative items shown are for illustrative purposes only. 5-The developer reserves the right to make alterations, at its absolute discretion, without any liability whatsoever up to the final 'as built' status.

32nd Floor Plan



1-Measurements are indicative 'finish to finish' in Metric & Imperial excluding construction tolerance. 2-Plot/unit dimensions may vary from brochure, and unit types/plans may exist as mirrored versions; 3-All images used are for illustrative purposes only. 4-Unless stated otherwise, all fittings and interior decorative items shown are for illustrative purposes only. 5-The developer reserves the right to make alterations, at its absolute discretion, without any liability whatsoever up to the final 'as built' status.

33rd Floor Plan



1-Measurements are indicative 'finish to finish' in Metric & Imperial excluding construction tolerance. 2-Plot/unit dimensions may vary from brochure, and unit types/plans may exist as mirrored versions; 3-All images used are for illustrative purposes only. 4-Unless stated otherwise, all fittings and interior decorative items shown are for illustrative purposes only. 5-The developer reserves the right to make alterations, at its absolute discretion, without any liability whatsoever up to the final 'as built' status.

34th to 36th Floor Plan

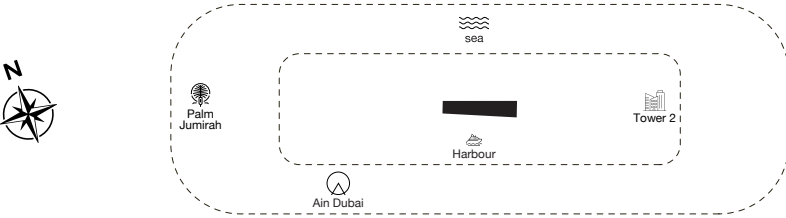
37th to 40th Floor Plan



1-Measurements are indicative 'finish to finish' in Metric & Imperial excluding construction tolerance. 2-Plot/unit dimensions may vary from brochure, and unit types/plans may exist as mirrored versions; 3-All images used are for illustrative purposes only. 4-Unless stated otherwise, all fittings and interior decorative items shown are for illustrative purposes only. 5-The developer reserves the right to make alterations, at its absolute discretion, without any liability whatsoever up to the final 'as built' status.

1-Measurements are indicative 'finish to finish' in Metric & Imperial excluding construction tolerance. 2-Plot/unit dimensions may vary from brochure, and unit types/plans may exist as mirrored versions; 3-All images used are for illustrative purposes only. 4-Unless stated otherwise, all fittings and interior decorative items shown are for illustrative purposes only. 5-The developer reserves the right to make alterations, at its absolute discretion, without any liability whatsoever up to the final 'as built' status.

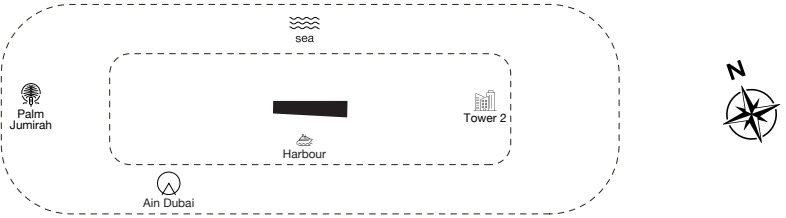
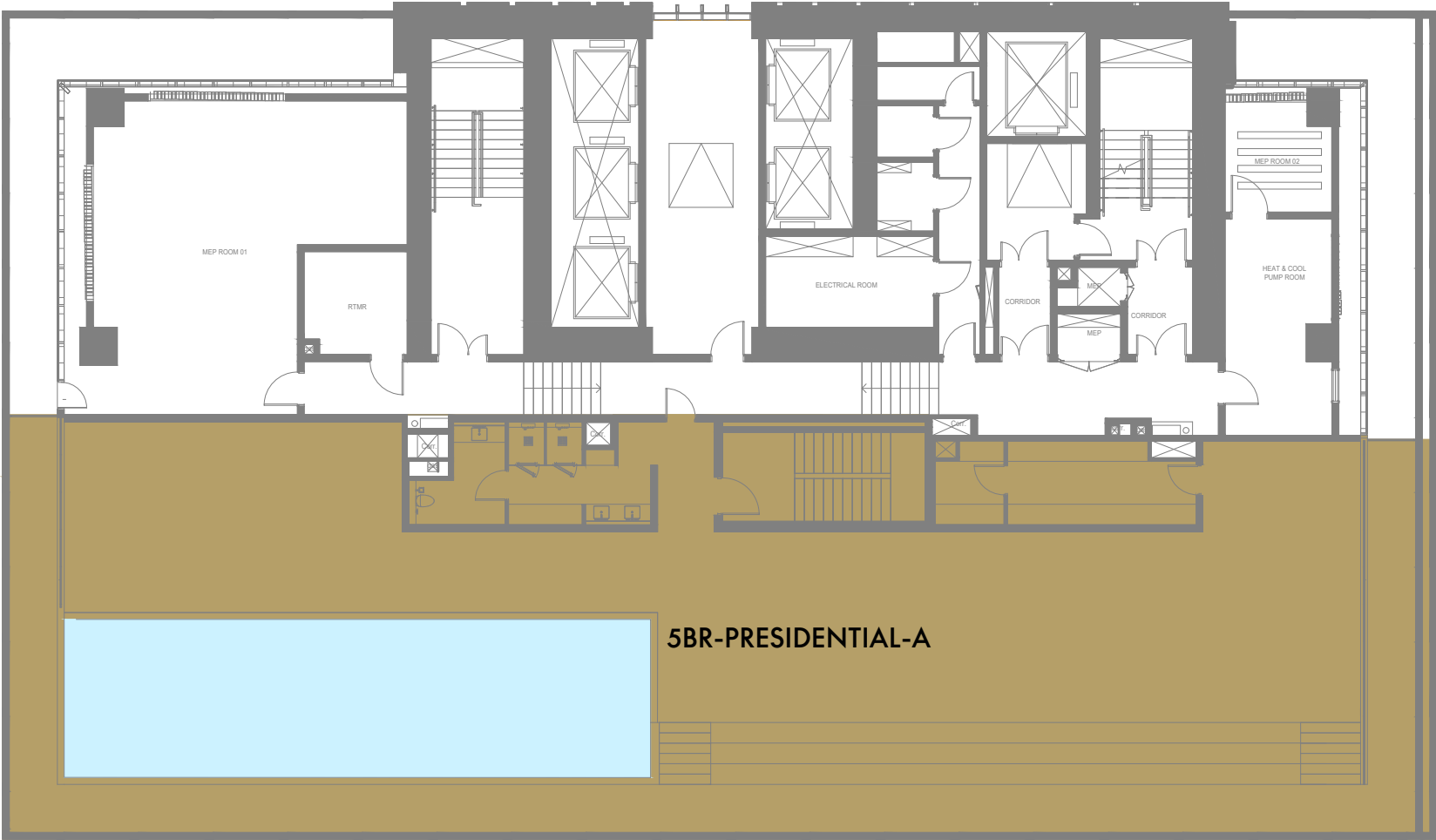
41st Presidential Suite Floor Plan



1 Bedroom 2 Bedrooms 2 Bedrooms Duplex 3 Bedrooms 3 Bedrooms Duplex 4 Bedrooms 4 Bedrooms Duplex 5 Bedrooms Penthouse 5 Bedrooms Presidential suite

1-Measurements are indicative 'finish to finish' in Metric & Imperial excluding construction tolerance. 2-Plot/unit dimensions may vary from brochure, and unit types/plans may exist as mirrored versions; 3-All images used are for illustrative purposes only. 4-Unless stated otherwise, all fittings and interior decorative items shown are for illustrative purposes only. 5-The developer reserves the right to make alterations, at its absolute discretion, without any liability whatsoever up to the final 'as built' status.

Presidential Suite Roof Top Floor Plan

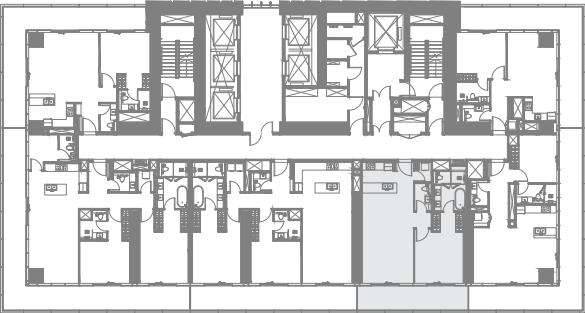
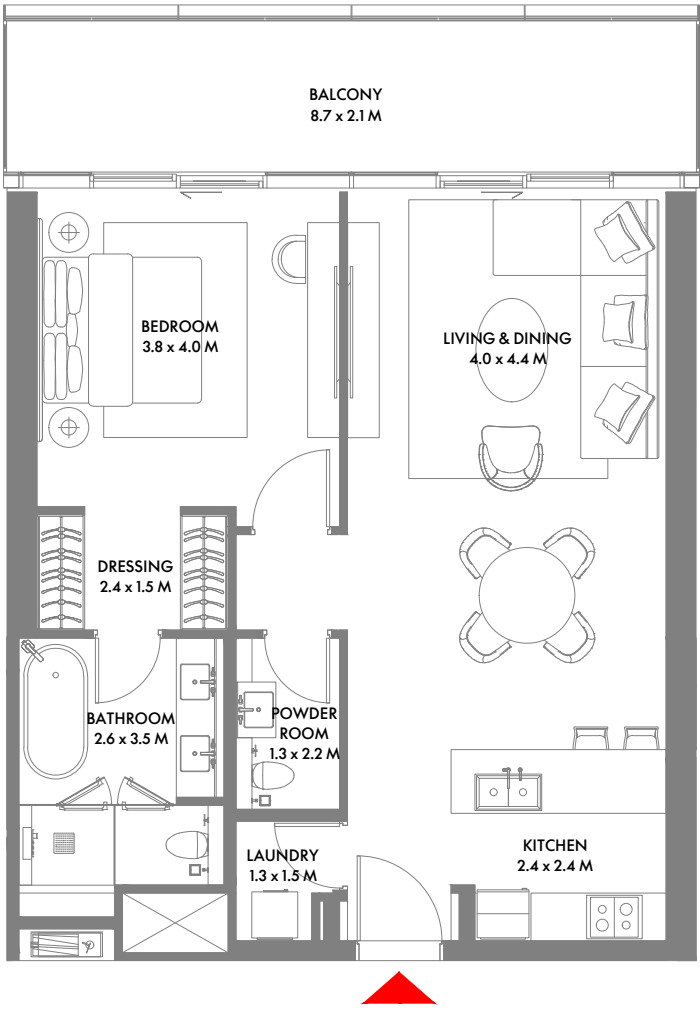


1 Bedroom 2 Bedrooms 2 Bedrooms Duplex 3 Bedrooms 3 Bedrooms Duplex 4 Bedrooms 4 Bedrooms Duplex 5 Bedrooms Penthouse 5 Bedrooms Presidential suite

1-Measurements are indicative 'finish to finish' in Metric & Imperial excluding construction tolerance. 2-Plot/unit dimensions may vary from brochure, and unit types/plans may exist as mirrored versions; 3-All images used are for illustrative purposes only. 4-Unless stated otherwise, all fittings and interior decorative items shown are for illustrative purposes only. 5-The developer reserves the right to make alterations, at its absolute discretion, without any liability whatsoever up to the final 'as built' status.

UNIT PLANS





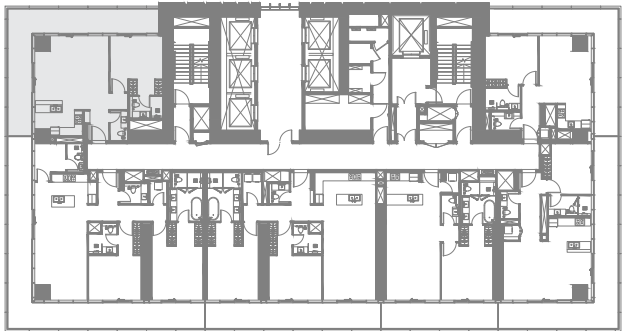
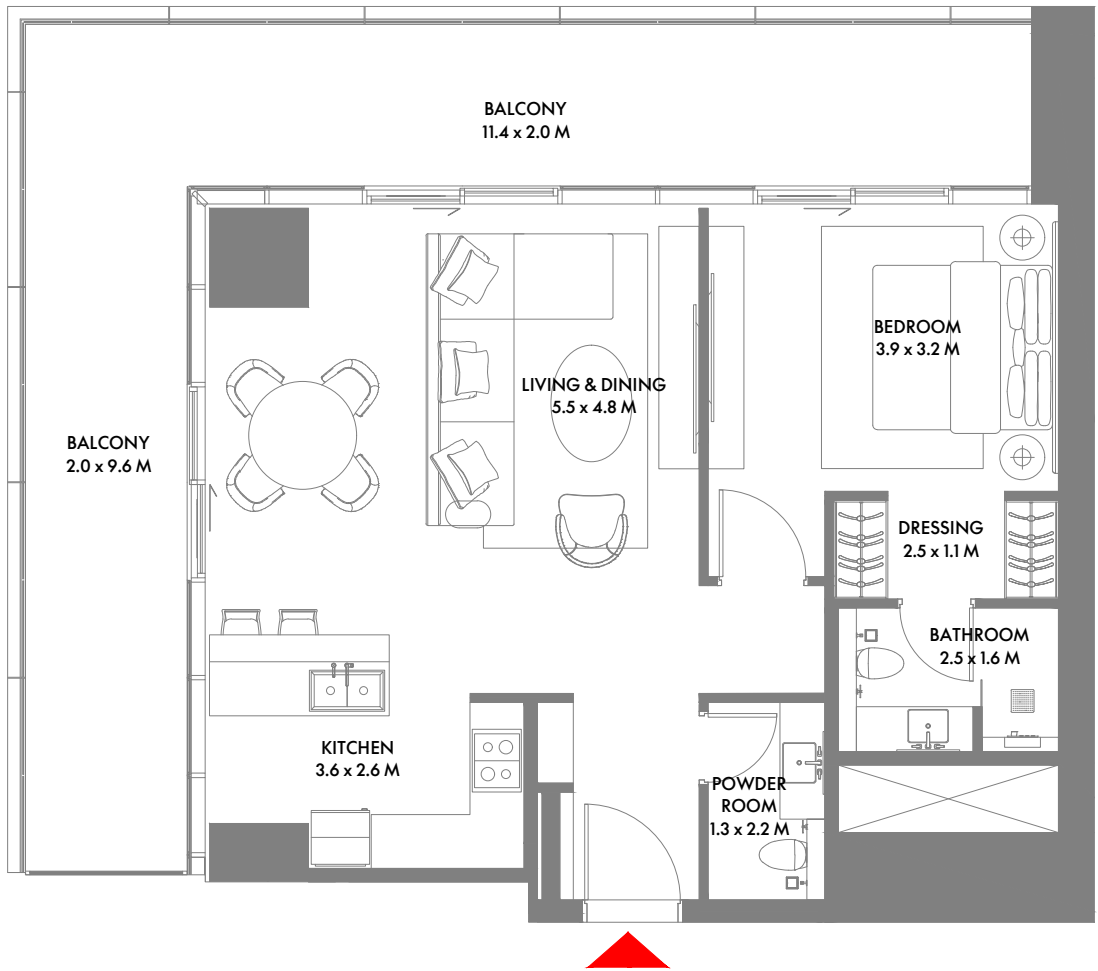
1ST TO 10TH FLOOR



1 Bedroom A

Max Suite Area: 81.92 Sqm (882 Sqft) | **Max Balcony Area:** 17.32 Sqm (187 Sqft) | **Max Total Area:** 99.24 Sqm (1,069 Sqft)

1-Measurements are indicative 'finish to finish' in Metric & Imperial excluding construction tolerance. 2-Plot/unit dimensions may vary from brochure, and unit types/plans may exist as mirrored versions; 3-All images used are for illustrative purposes only. 4-Unless stated otherwise, all fittings and interior decorative items shown are for illustrative purposes only. 5-The developer reserves the right to make alterations, at its absolute discretion, without any liability whatsoever up to the final 'as built' status.



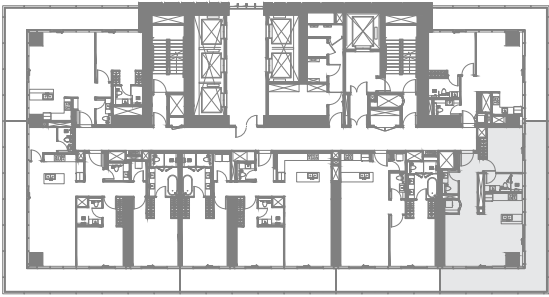
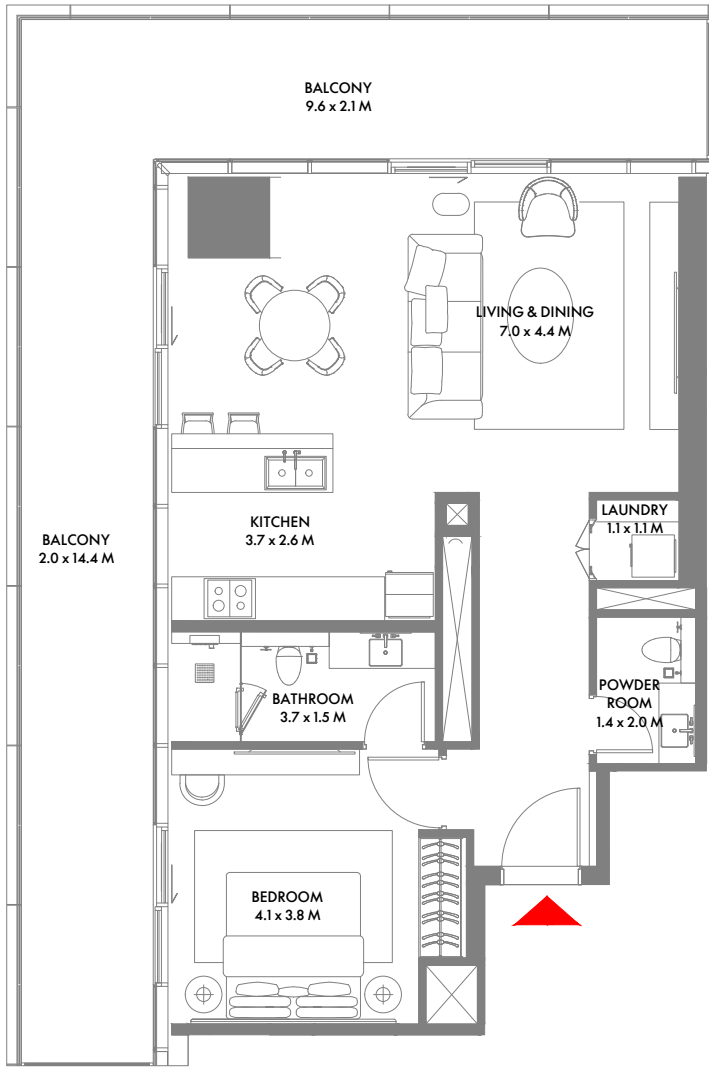
1ST TO 10TH FLOOR



1 Bedroom B

Max Suite Area: 74.08 Sqm (798 Sqft) | **Max Balcony Area:** 36.66 Sqm (395 Sqft) | **Max Total Area:** 110.74 Sqm (1,193 Sqft)

1-Measurements are indicative 'finish to finish' in Metric & Imperial excluding construction tolerance. 2-Plot/unit dimensions may vary from brochure, and unit types/plans may exist as mirrored versions; 3-All images used are for illustrative purposes only. 4-Unless stated otherwise, all fittings and interior decorative items shown are for illustrative purposes only. 5-The developer reserves the right to make alterations, at its absolute discretion, without any liability whatsoever up to the final 'as built' status.



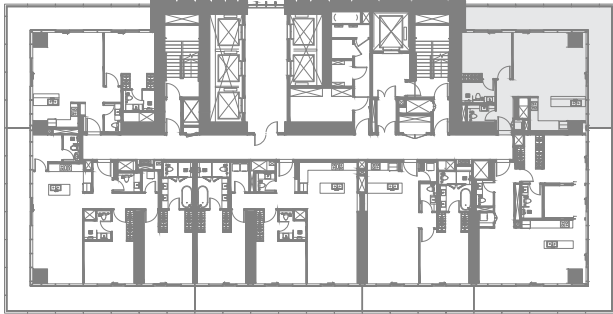
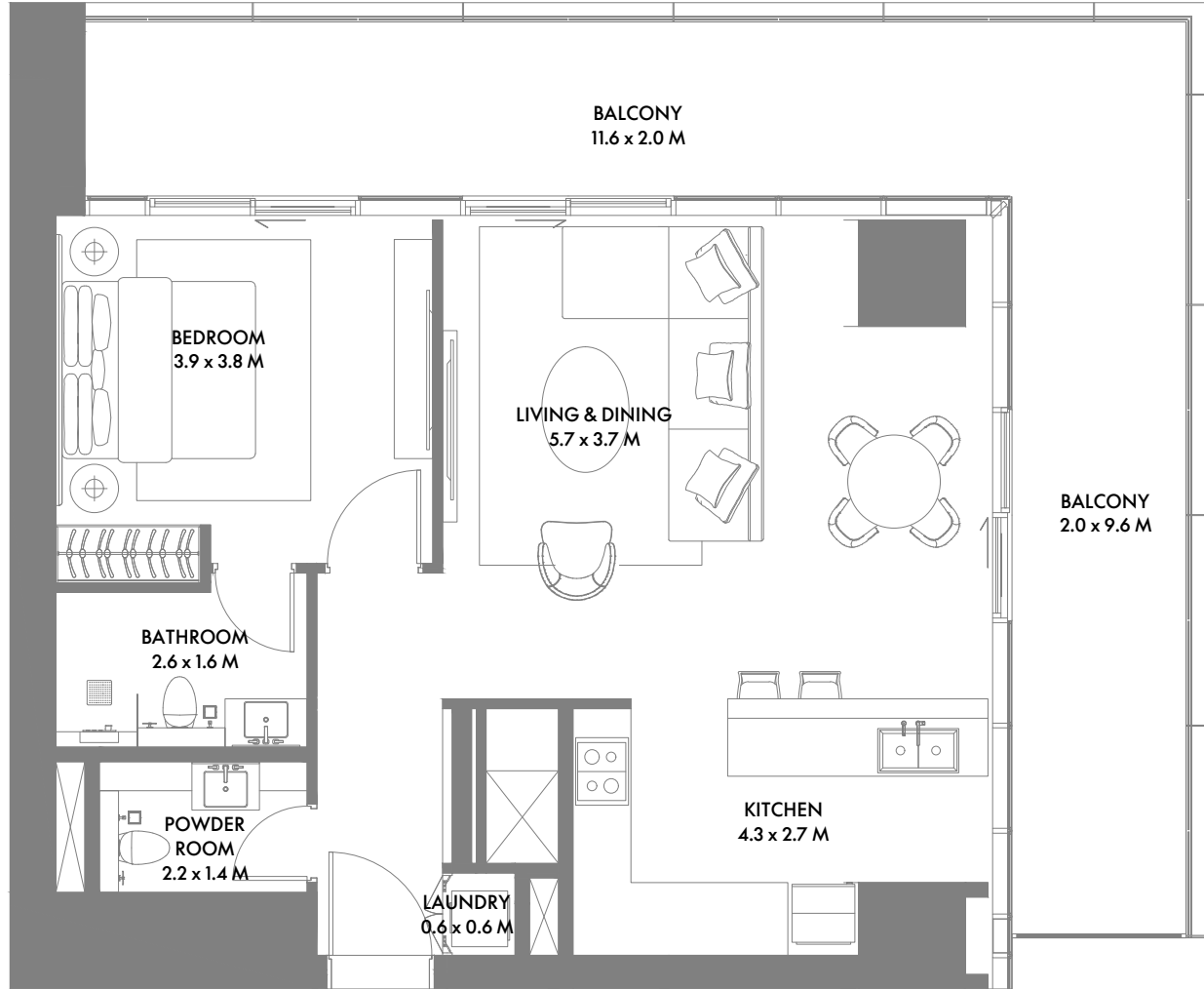
1ST TO 2ND FLOOR



1 Bedroom C

Min Suite Area: 72.84 Sqm (785 Sqft) | **Min Balcony Area:** 40.71 Sqm (438 Sqft) | **Min Total Area:** 113.55 Sqm (1,223 Sqft)
Max Suite Area: 78.24 Sqm (843 Sqft) | **Max Balcony Area:** 41.60 Sqm (447 Sqft) | **Max Total Area:** 119.84 Sqm (1,290 Sqft)

1-Measurements are indicative 'finish to finish' in Metric & Imperial excluding construction tolerance. 2-Plot/unit dimensions may vary from brochure, and unit types/plans may exist as mirrored versions; 3-All images used are for illustrative purposes only. 4-Unless stated otherwise, all fittings and interior decorative items shown are for illustrative purposes only. 5-The developer reserves the right to make alterations, at its absolute discretion, without any liability whatsoever up to the final 'as built' status.



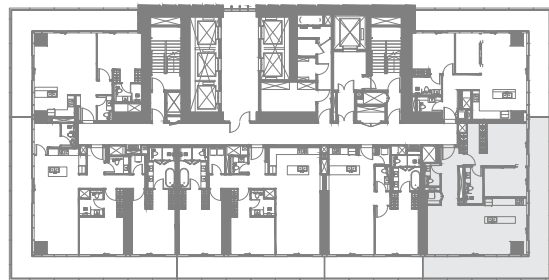
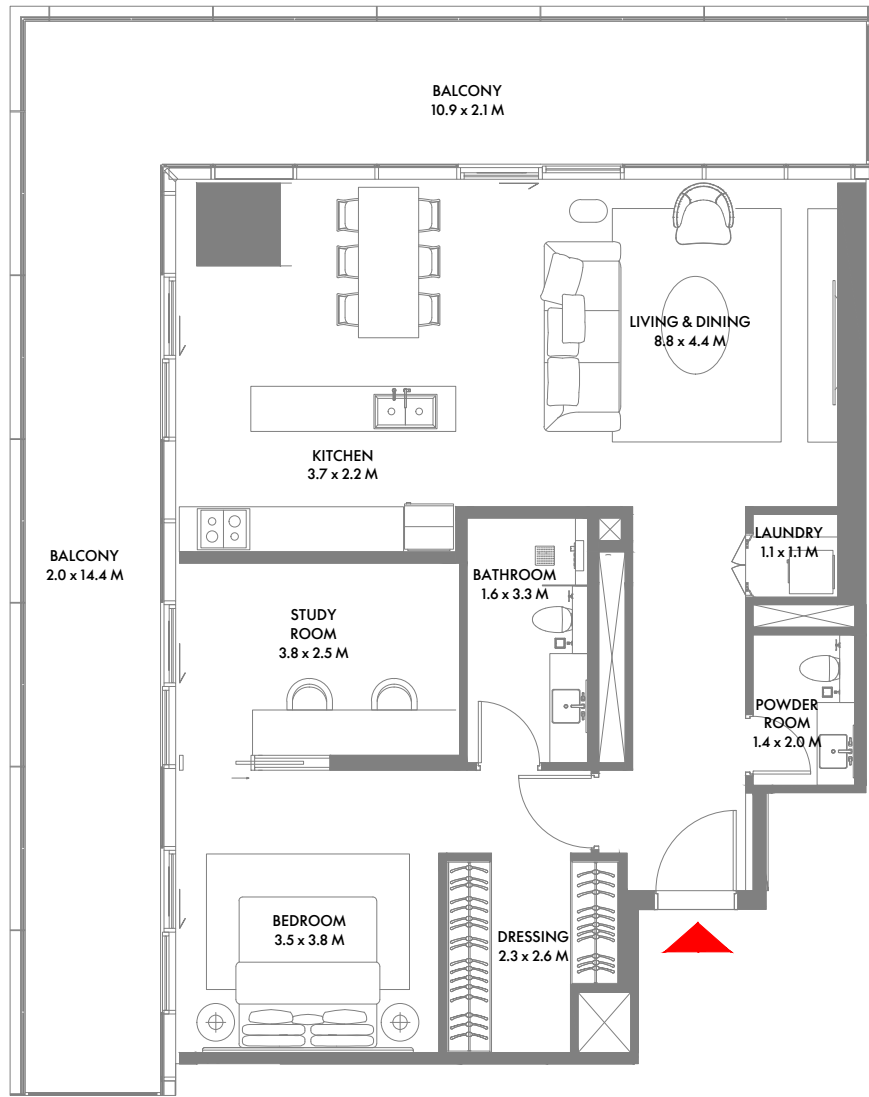
1ST TO 5TH FLOOR



1 Bedroom D

Min Suite Area: 61.39 Sqm (661 Sqft) | **Min Balcony Area:** 33.58 Sqm (362 Sqft) | **Min Total Area:** 94.97 Sqm (1,023 Sqft)
Max Suite Area: 77.00 Sqm (829 Sqft) | **Max Balcony Area:** 36.94 Sqm (398 Sqft) | **Max Total Area:** 113.94 Sqm (1,227 Sqft)

1-Measurements are indicative 'finish to finish' in Metric & Imperial excluding construction tolerance. 2-Plot/unit dimensions may vary from brochure, and unit types/plans may exist as mirrored versions; 3-All images used are for illustrative purposes only. 4-Unless stated otherwise, all fittings and interior decorative items shown are for illustrative purposes only. 5-The developer reserves the right to make alterations, at its absolute discretion, without any liability whatsoever up to the final 'as built' status.



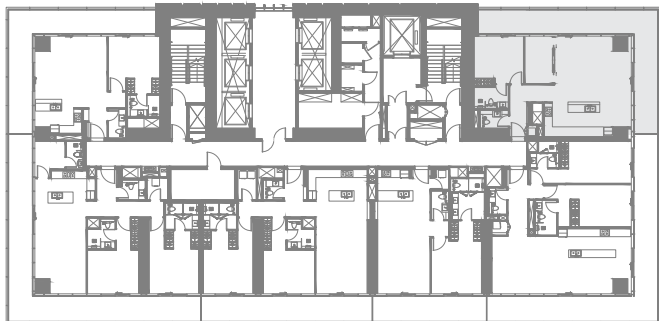
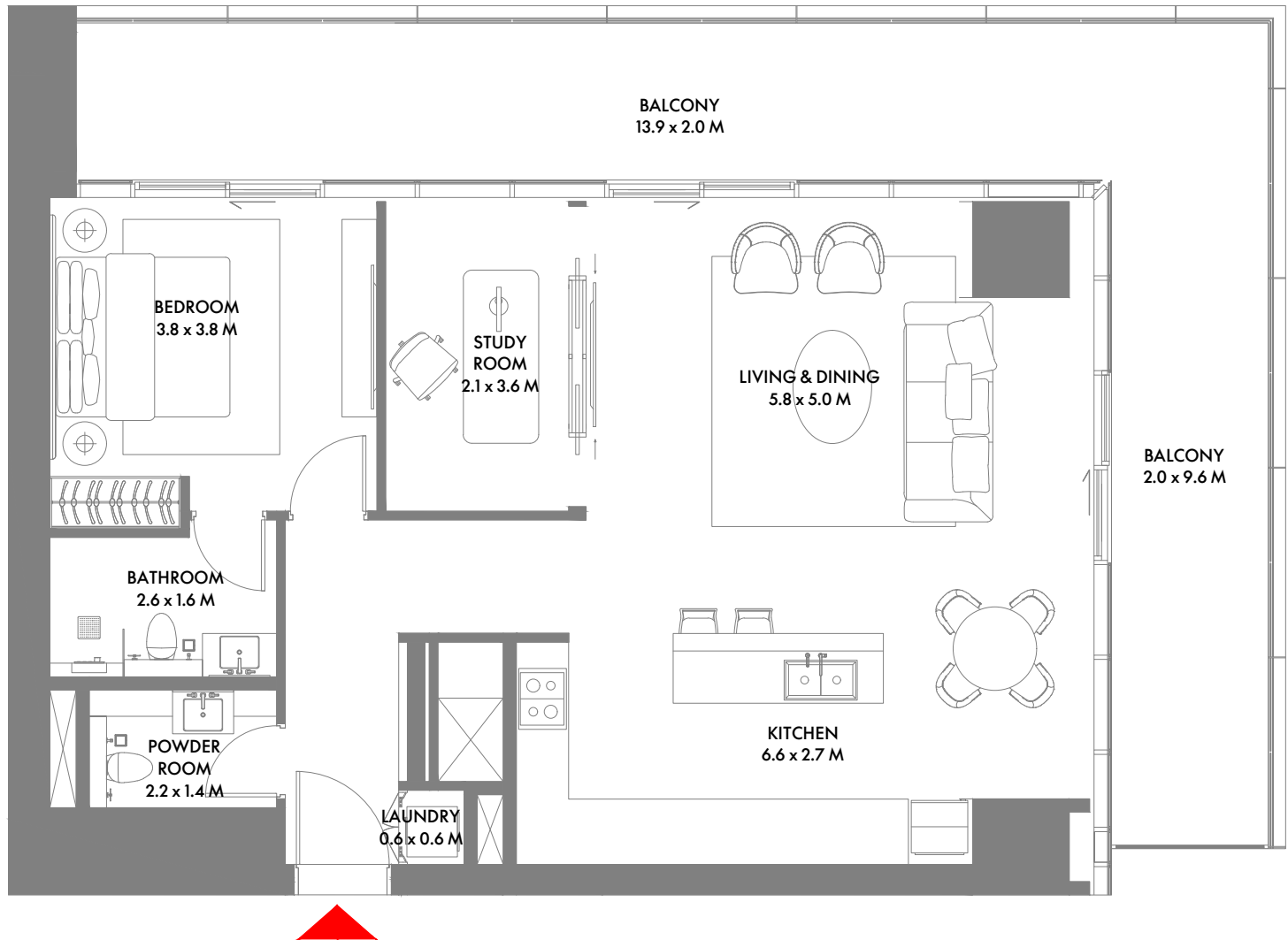
3RD TO 6TH FLOOR



1 Bedroom E

Min Suite Area: 83.79 Sqm (902 Sqft) | **Min Balcony Area:** 42.47 Sqm (458 Sqft) | **Min Total Area:** 126.26 Sqm (1,360 Sqft)
Max Suite Area: 100.16 Sqm (1,079 Sqft) | **Max Balcony Area:** 45.16 Sqm (486 Sqft) | **Max Total Area:** 145.32 Sqm (1,565 Sqft)

1-Measurements are indicative 'finish to finish' in Metric & Imperial excluding construction tolerance. 2-Plot/unit dimensions may vary from brochure, and unit types/plans may exist as mirrored versions; 3-All images used are for illustrative purposes only. 4-Unless stated otherwise, all fittings and interior decorative items shown are for illustrative purposes only. 5-The developer reserves the right to make alterations, at its absolute discretion, without any liability whatsoever up to the final 'as built' status.



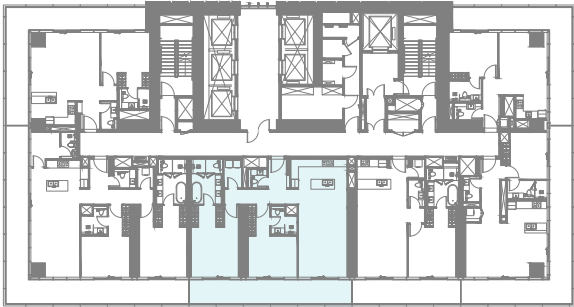
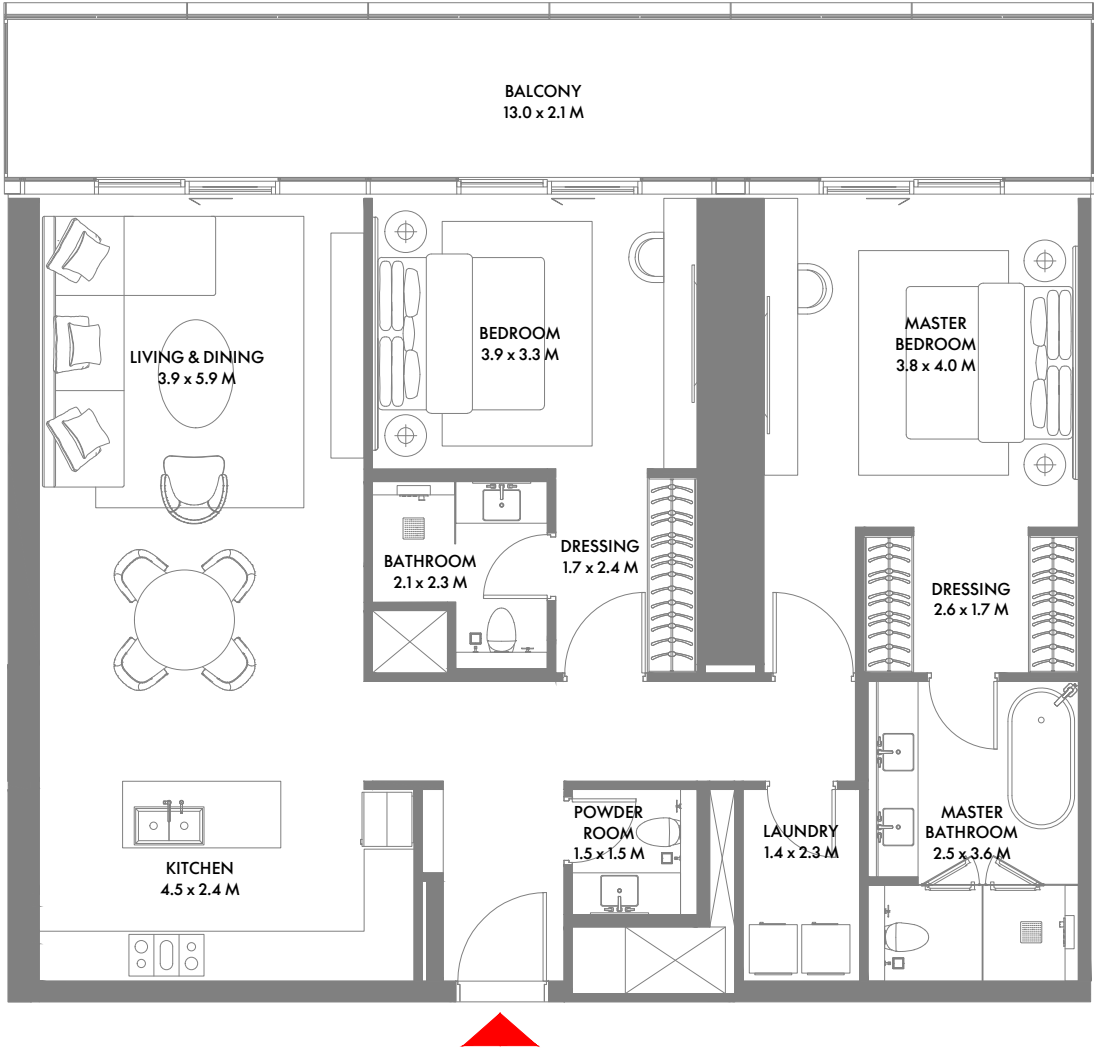
6TH TO 10TH FLOOR



1 Bedroom F

Min Suite Area: 80.65 Sqm (869 Sqft) | **Min Balcony Area:** 37.79 Sqm (406 Sqft) | **Min Total Area:** 118.44 Sqm (1,275 Sqft)
Max Suite Area: 95.08 Sqm (1,024 Sqft) | **Max Balcony Area:** 41.34 Sqm (445 Sqft) | **Max Total Area:** 136.42 Sqm (1,469 Sqft)

1-Measurements are indicative 'finish to finish' in Metric & Imperial excluding construction tolerance. 2-Plot/unit dimensions may vary from brochure, and unit types/plans may exist as mirrored versions; 3-All images used are for illustrative purposes only. 4-Unless stated otherwise, all fittings and interior decorative items shown are for illustrative purposes only. 5-The developer reserves the right to make alterations, at its absolute discretion, without any liability whatsoever up to the final 'as built' status.

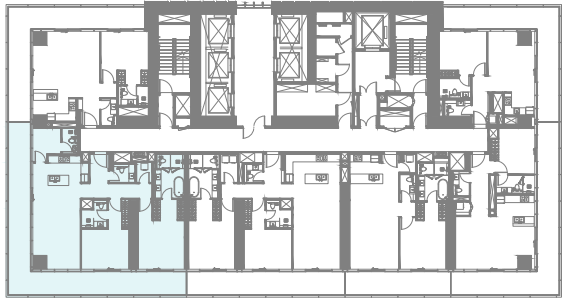
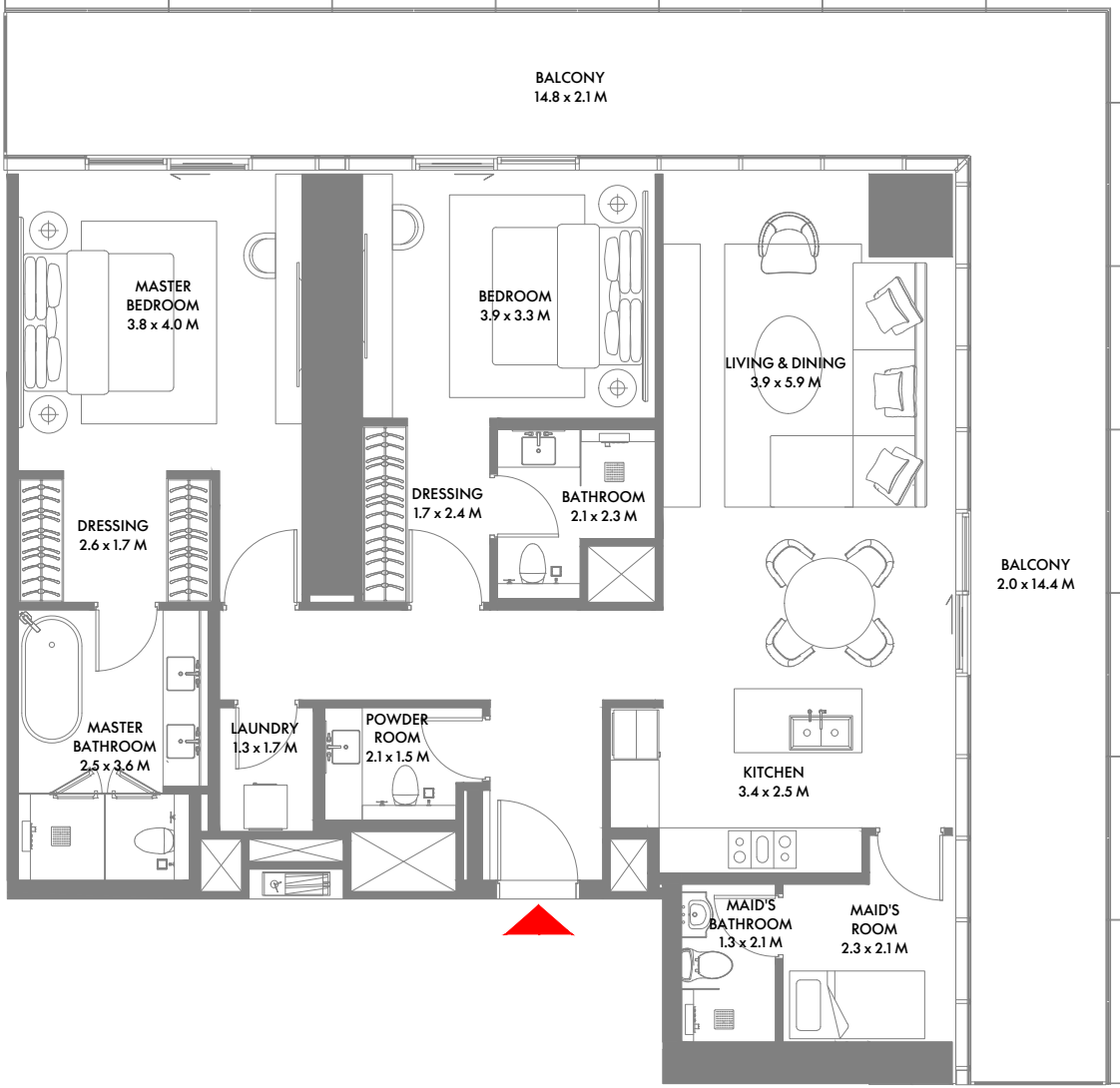


1ST TO 9TH, 14TH TO 21ST & 23RD TO 27TH FLOOR

2 Bedroom A

Min Suite Area: 121.33 Sqm (1306 Sqft) | **Min Balcony Area:** 25.97 Sqm (280 Sqft) | **Min Total Area:** 147.30 Sqm (1,586 Sqft)
Max Suite Area: 122.58 Sqm (1,320 Sqft) | **Max Balcony Area:** 25.97 Sqm (279 Sqft) | **Max Total Area:** 148.55 Sqm (1,599 Sqft)

1-Measurements are indicative 'finish to finish' in Metric & Imperial excluding construction tolerance. 2-Plot/unit dimensions may vary from brochure, and unit types/plans may exist as mirrored versions; 3-All images used are for illustrative purposes only. 4-Unless stated otherwise, all fittings and interior decorative items shown are for illustrative purposes only. 5-The developer reserves the right to make alterations, at its absolute discretion, without any liability whatsoever up to the final 'as built' status.

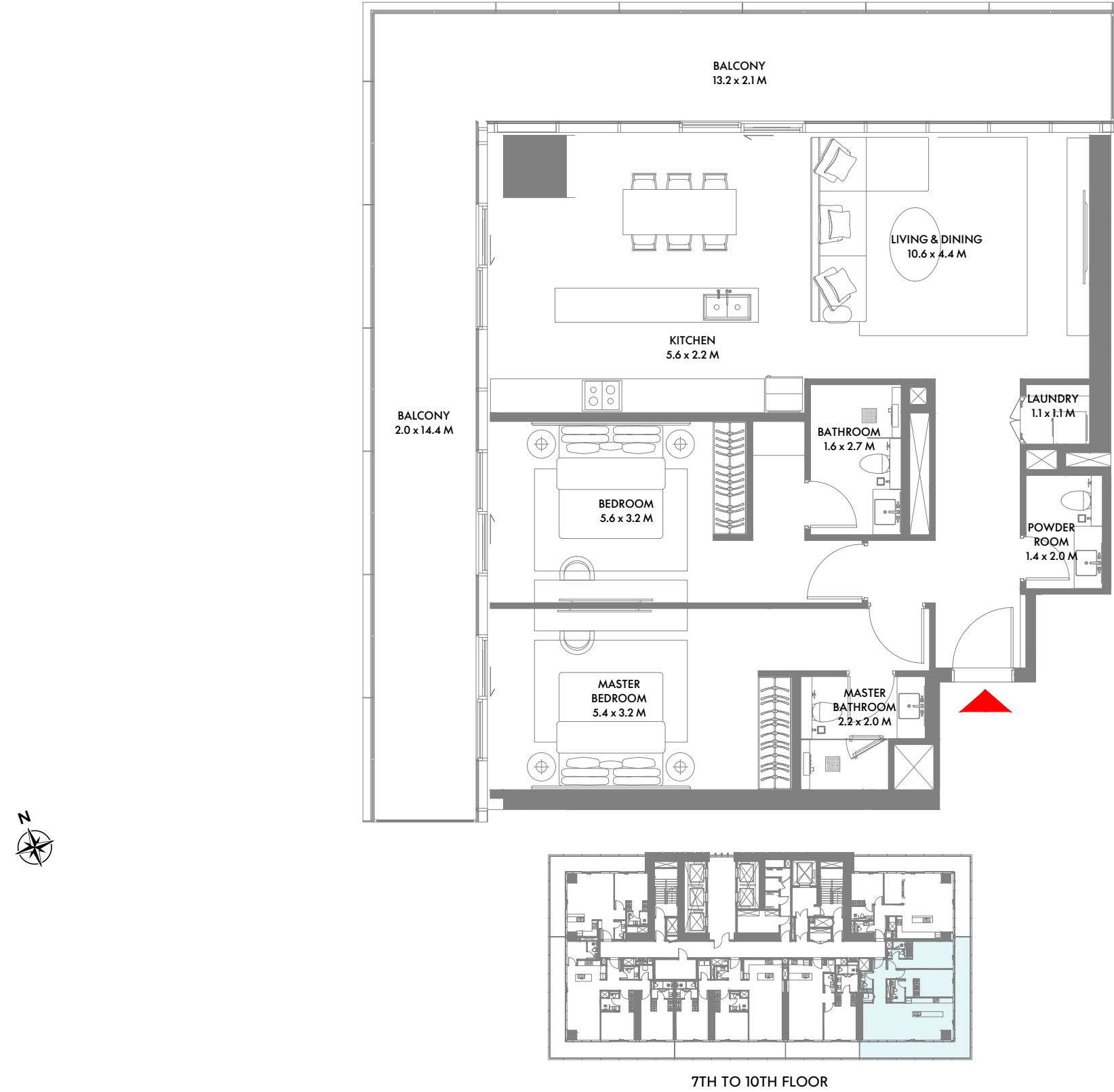


1ST TO 9TH FLOOR

2 Bedroom B

Max Suite Area: 129.23 Sqm (1,392 Sqft) | **Max Balcony Area:** 51.88 Sqm (558 Sqft) | **Max Total Area:** 181.11 Sqm (1,950 Sqft)

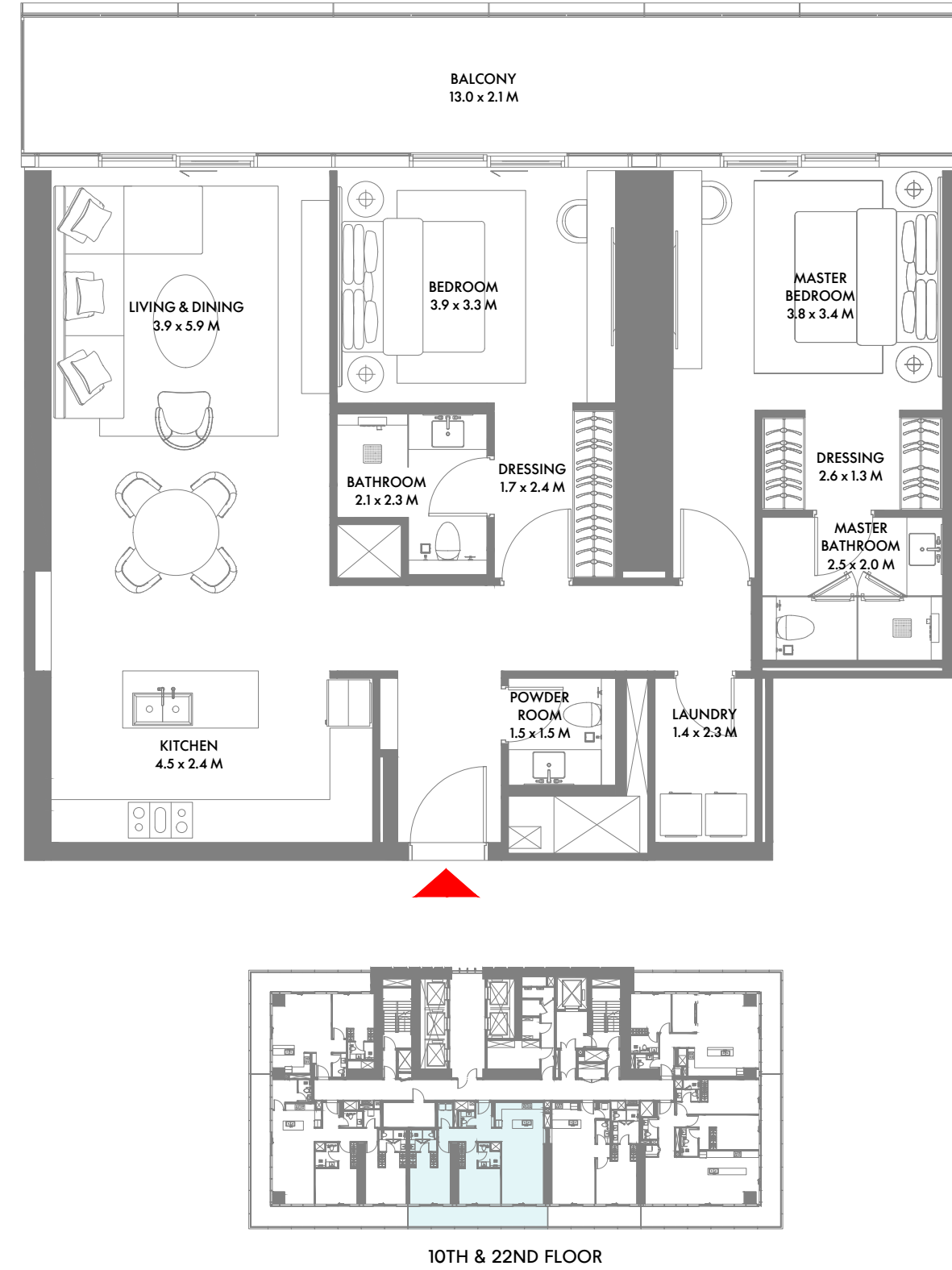
1-Measurements are indicative 'finish to finish' in Metric & Imperial excluding construction tolerance. 2-Plot/unit dimensions may vary from brochure, and unit types/plans may exist as mirrored versions; 3-All images used are for illustrative purposes only. 4-Unless stated otherwise, all fittings and interior decorative items shown are for illustrative purposes only. 5-The developer reserves the right to make alterations, at its absolute discretion, without any liability whatsoever up to the final 'as built' status.



2 Bedroom C

Min Suite Area: 105.72 Sqm (1,138 Sqft) | **Min Balcony Area:** 46.26 Sqm (498 Sqft) | **Min Total Area:** 151.98 Sqm (1,636 Sqft)
Max Suite Area: 122.10 Sqm (1,315 Sqft) | **Max Balcony Area:** 48.88 Sqm (526 Sqft) | **Max Total Area:** 170.98 Sqm (1,841 Sqft)

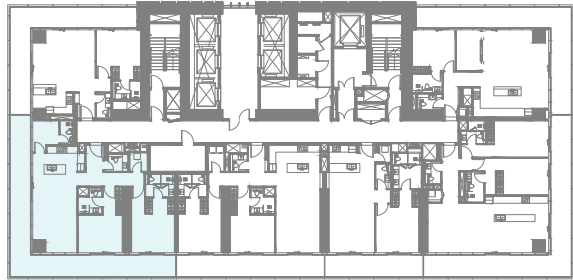
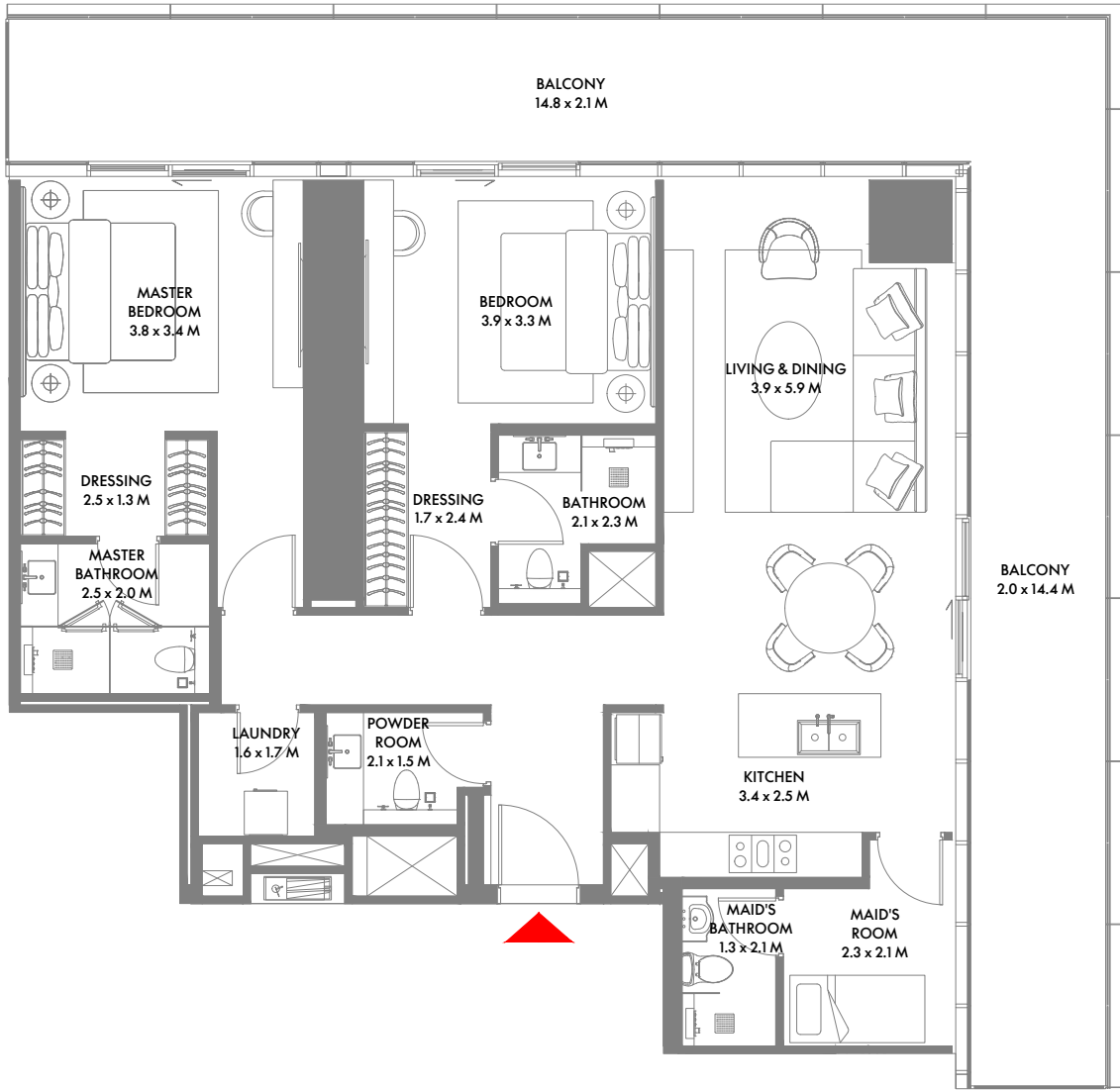
1-Measurements are indicative 'finish to finish' in Metric & Imperial excluding construction tolerance. 2-Plot/unit dimensions may vary from brochure, and unit types/plans may exist as mirrored versions; 3-All images used are for illustrative purposes only. 4-Unless stated otherwise, all fittings and interior decorative items shown are for illustrative purposes only. 5-The developer reserves the right to make alterations, at its absolute discretion, without any liability whatsoever up to the final 'as built' status.



2 Bedroom D

Min Suite Area: 114.49 Sqm (1,233 Sqft) | **Min Balcony Area:** 25.97 Sqm (279 Sqft) | **Min Total Area:** 140.46 Sqm (1,512 Sqft)
Max Suite Area: 115.76 Sqm (1,247 Sqft) | **Max Balcony Area:** 25.97 Sqm (279 Sqft) | **Max Total Area:** 141.73 Sqm (1,526 Sqft)

1-Measurements are indicative 'finish to finish' in Metric & Imperial excluding construction tolerance. 2-Plot/unit dimensions may vary from brochure, and unit types/plans may exist as mirrored versions; 3-All images used are for illustrative purposes only. 4-Unless stated otherwise, all fittings and interior decorative items shown are for illustrative purposes only. 5-The developer reserves the right to make alterations, at its absolute discretion, without any liability whatsoever up to the final 'as built' status.

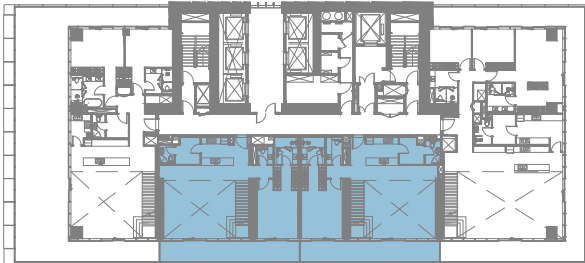
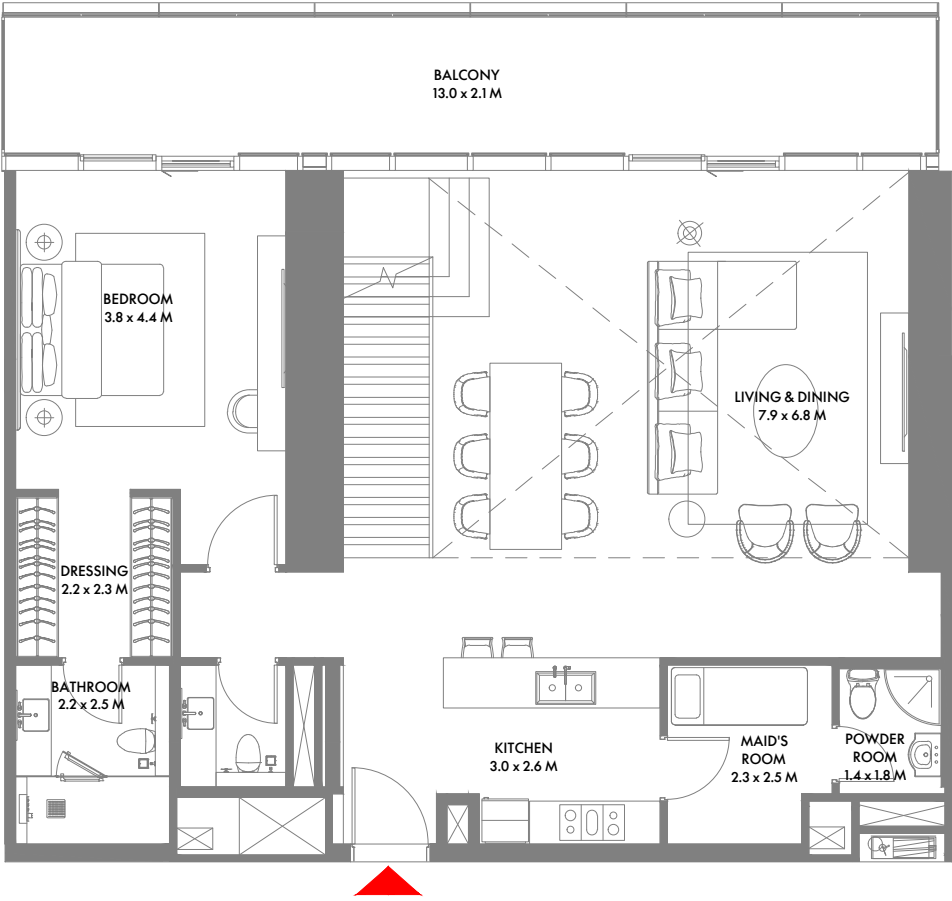


10TH FLOOR

2 Bedroom E

Max Suite Area: 122.98 Sqm (1,324 Sqft) | **Max Balcony Area:** 51.88 Sqm (559 Sqft) | **Max Total Area:** 174.86 Sqm (1,883 Sqft)

1-Measurements are indicative 'finish to finish' in Metric & Imperial excluding construction tolerance. 2-Plot/unit dimensions may vary from brochure, and unit types/plans may exist as mirrored versions; 3-All images used are for illustrative purposes only. 4-Unless stated otherwise, all fittings and interior decorative items shown are for illustrative purposes only. 5-The developer reserves the right to make alterations, at its absolute discretion, without any liability whatsoever up to the final 'as built' status.

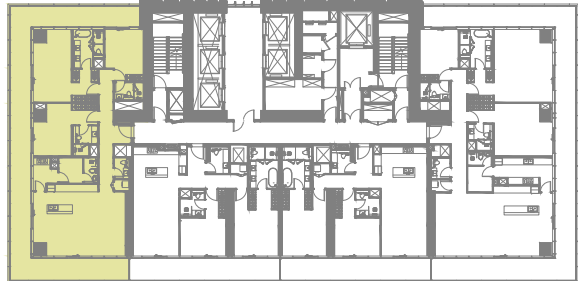
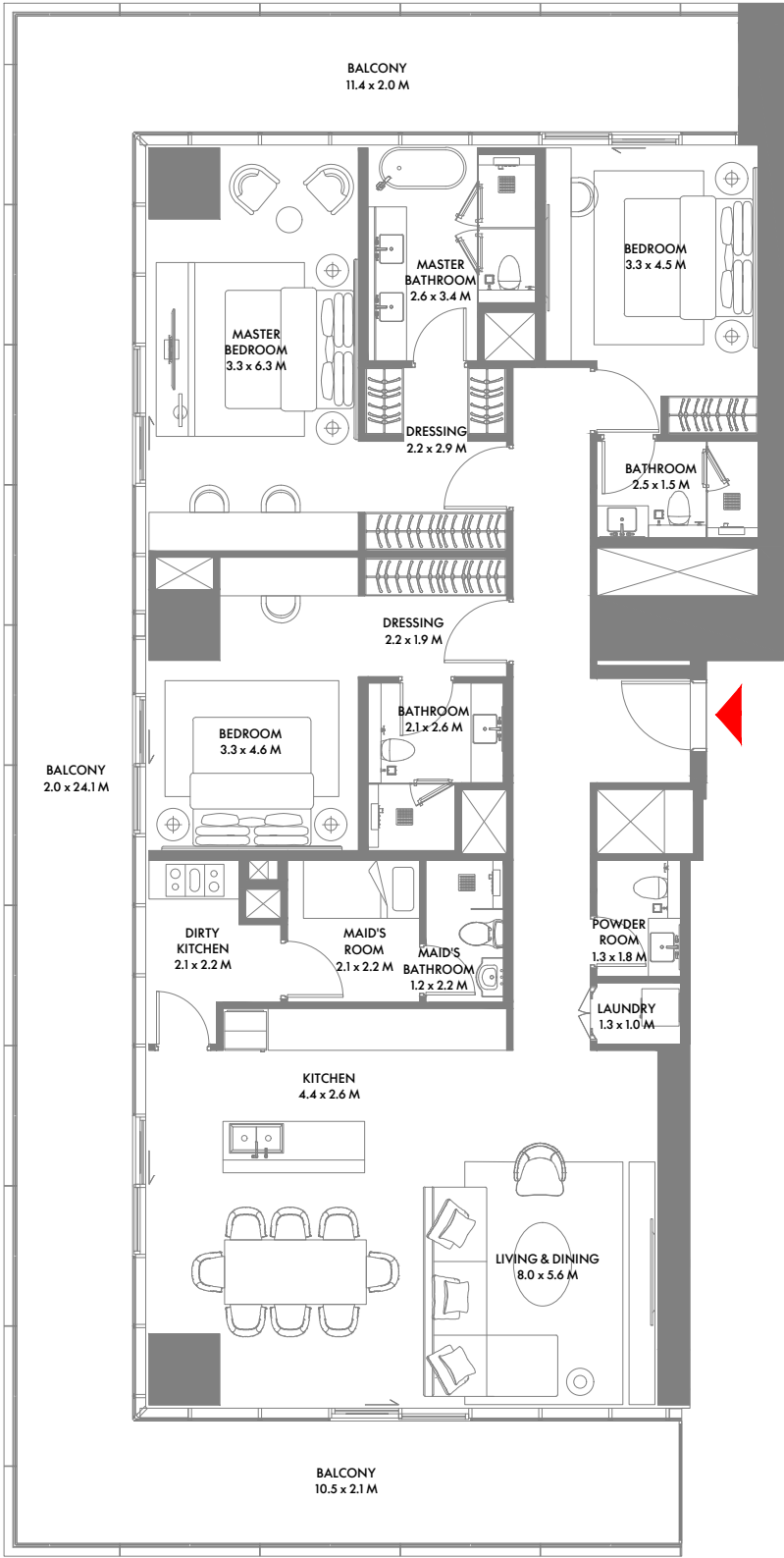


11TH FLOOR

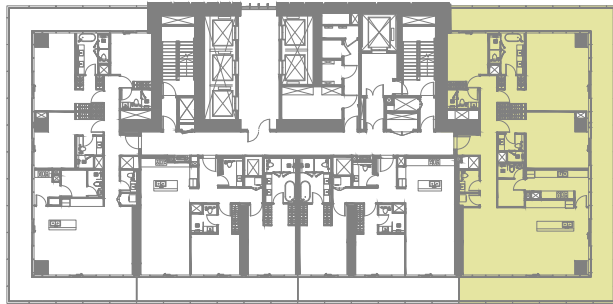
2 Bedroom Duplex A

Min Suite Area: 210.54 Sqm (2,267 Sqft) | **Min Balcony Area:** 25.77 Sqm (277 Sqft) | **Min Total Area:** 236.31 Sqm (2,544 Sqft)
Max Suite Area: 213.74 Sqm (2,301 Sqft) | **Max Balcony Area:** 25.77 Sqm (278 Sqft) | **Max Total Area:** 239.51 Sqm (2,579 Sqft)

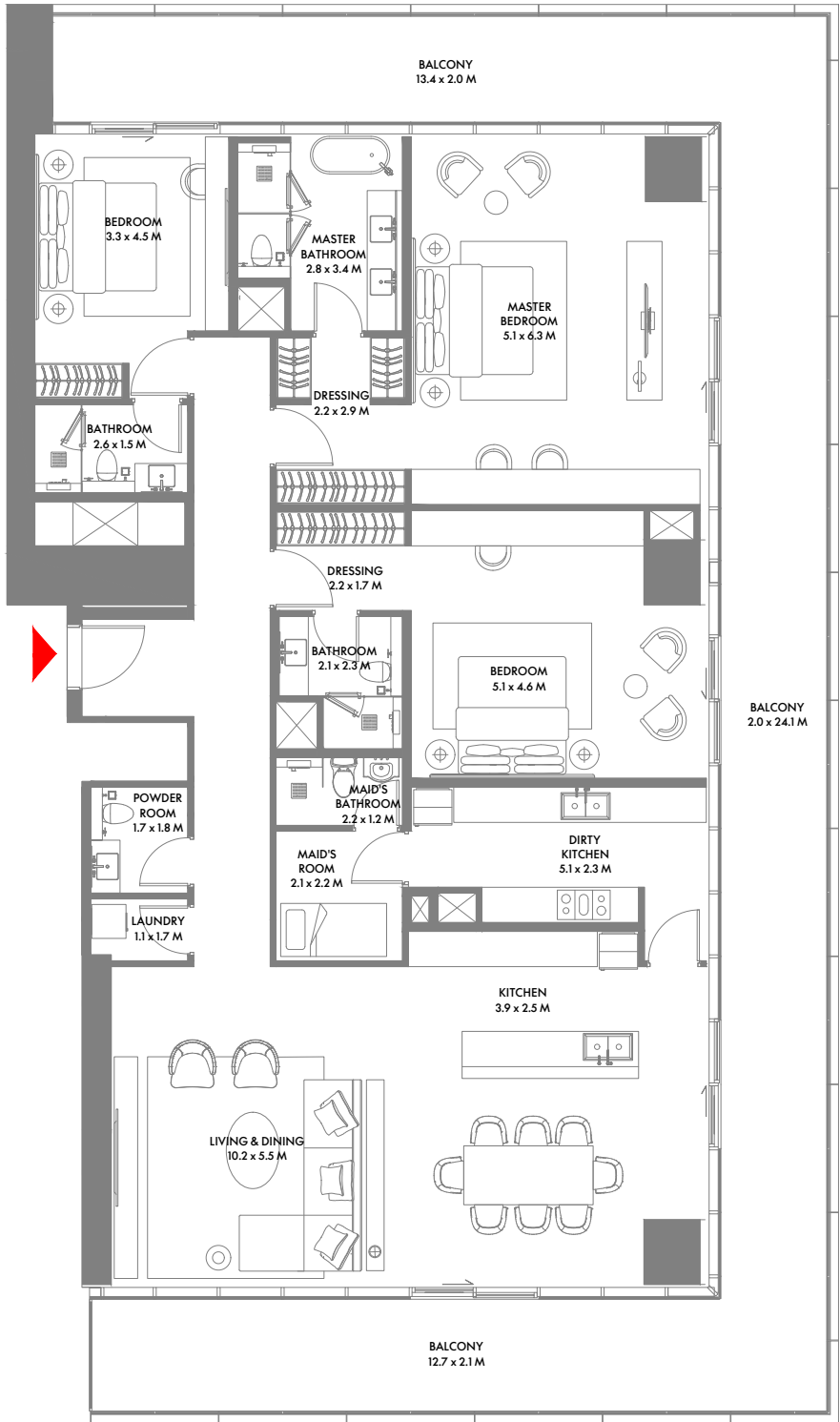
1-Measurements are indicative 'finish to finish' in Metric & Imperial excluding construction tolerance. 2-Plot/unit dimensions may vary from brochure, and unit types/plans may exist as mirrored versions; 3-All images used are for illustrative purposes only. 4-Unless stated otherwise, all fittings and interior decorative items shown are for illustrative purposes only. 5-The developer reserves the right to make alterations, at its absolute discretion, without any liability whatsoever up to the final 'as built' status.



14TH TO 27TH FLOOR



14TH TO 21ST FLOOR



3 Bedroom A

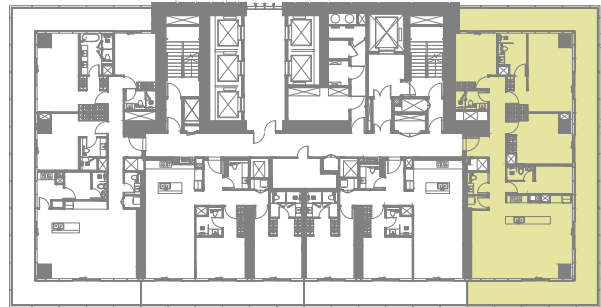
Max Suite Area: 174.05 Sqm (1,874 Sqft) | **Max Balcony Area:** 79.86 Sqm (860 Sqft) | **Max Total Area:** 253.91 Sqm (2,734 Sqft)

1-Measurements are indicative 'finish to finish' in Metric & Imperial excluding construction tolerance. 2-Plot/unit dimensions may vary from brochure, and unit types/plans may exist as mirrored versions; 3-All images used are for illustrative purposes only. 4-Unless stated otherwise, all fittings and interior decorative items shown are for illustrative purposes only. 5-The developer reserves the right to make alterations, at its absolute discretion, without any liability whatsoever up to the final 'as built' status.

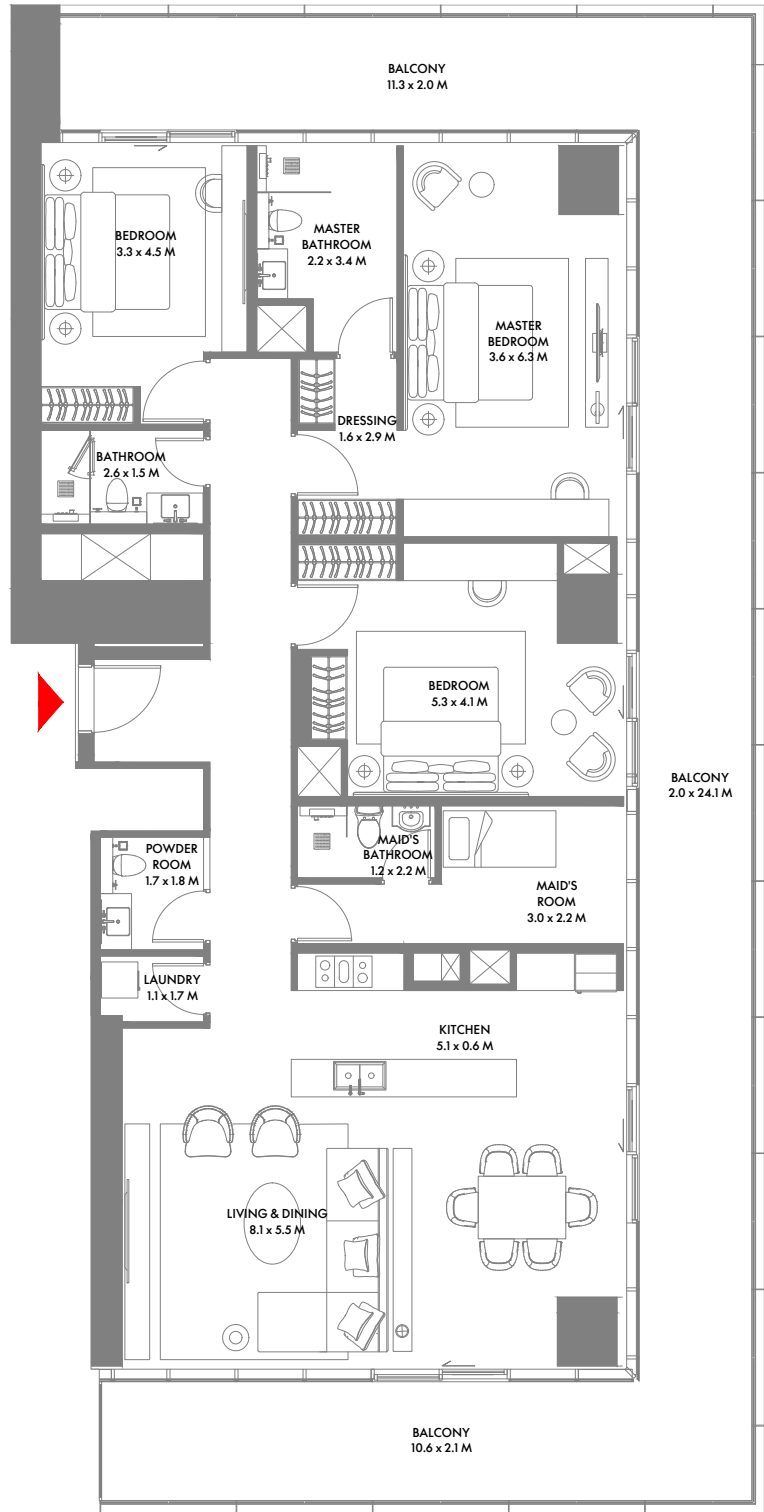
3 Bedroom B

Min Suite Area: 179.46 Sqm (1,932 Sqft) | **Min Balcony Area:** 80.95 Sqm (872 Sqft) | **Min Total Area:** 260.41 Sqm (2,804 Sqft)
Max Suite Area: 216.31 Sqm (2,329 Sqft) | **Max Balcony Area:** 87.91 Sqm (946 Sqft) | **Max Total Area:** 304.22 Sqm (3,275 Sqft)

1-Measurements are indicative 'finish to finish' in Metric & Imperial excluding construction tolerance. 2-Plot/unit dimensions may vary from brochure, and unit types/plans may exist as mirrored versions; 3-All images used are for illustrative purposes only. 4-Unless stated otherwise, all fittings and interior decorative items shown are for illustrative purposes only. 5-The developer reserves the right to make alterations, at its absolute discretion, without any liability whatsoever up to the final 'as built' status.



22ND TO 27TH FLOOR



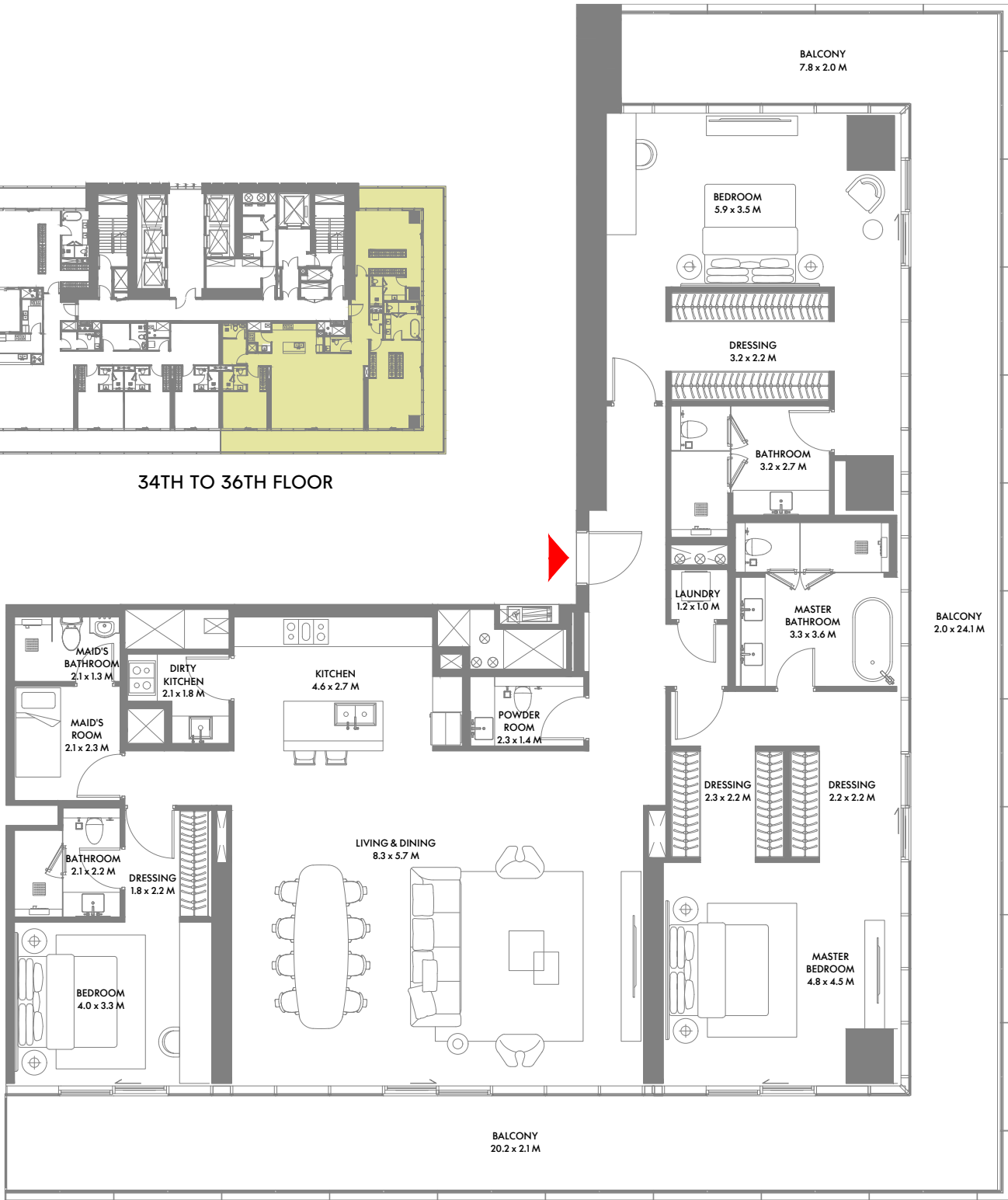
3 Bedroom C

Min Suite Area: 148.08 Sqm (1,594 Sqft) | **Min Balcony Area:** 74.77 Sqm (805 Sqft) | **Min Total Area:** 222.85 Sqm (2,399 Sqft)
Max Suite Area: 174.12 Sqm (1,875 Sqft) | **Max Balcony Area:** 79.75 Sqm (858 Sqft) | **Max Total Area:** 253.87 Sqm (2,733 Sqft)

1-Measurements are indicative 'finish to finish' in Metric & Imperial excluding construction tolerance. 2-Plot/unit dimensions may vary from brochure, and unit types/plans may exist as mirrored versions; 3-All images used are for illustrative purposes only. 4-Unless stated otherwise, all fittings and interior decorative items shown are for illustrative purposes only. 5-The developer reserves the right to make alterations, at its absolute discretion, without any liability whatsoever up to the final 'as built' status.



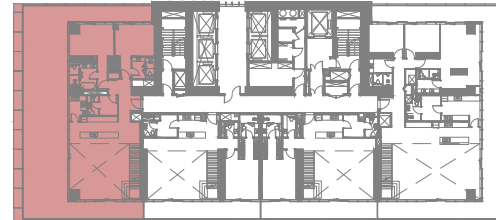
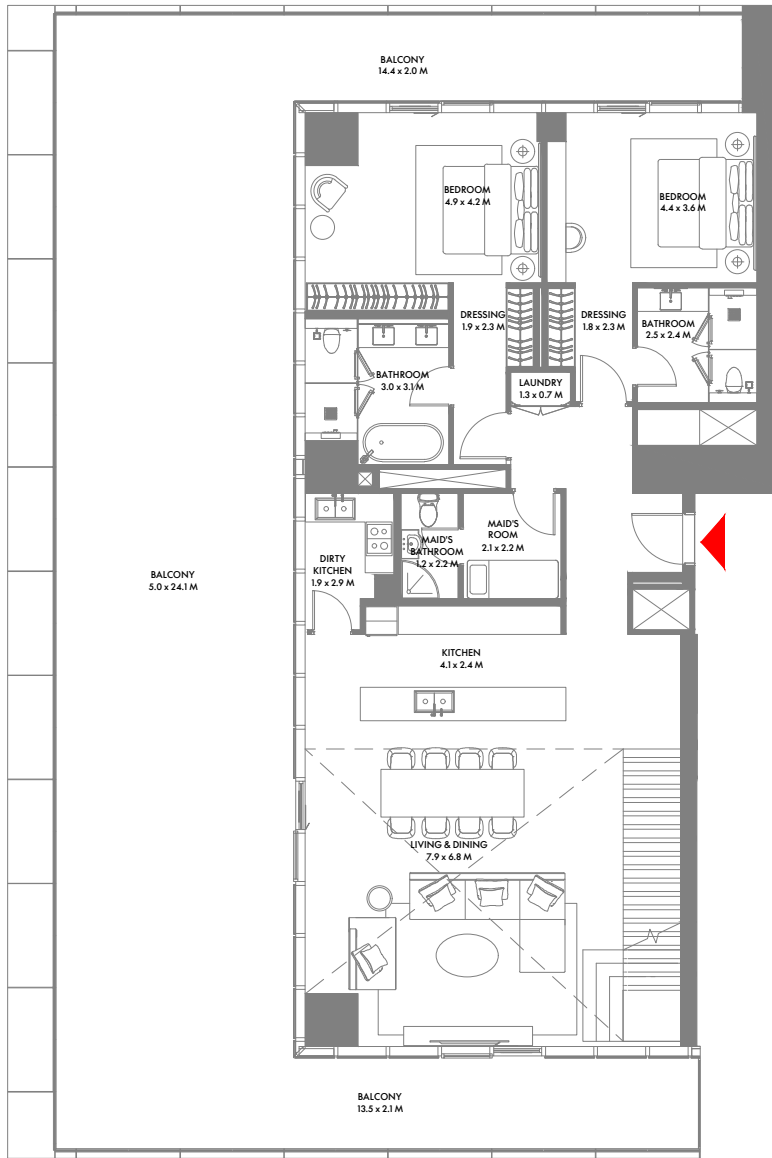
34TH TO 36TH FLOOR



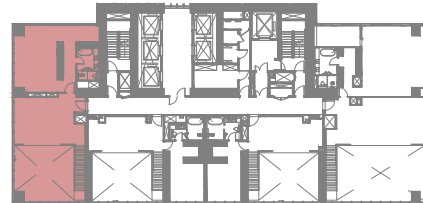
3 Bedroom D

Min Suite Area: 225.37 Sqm (2,426 Sqft) | **Min Balcony Area:** 90.44 Sqm (974 Sqft) | **Min Total Area:** 315.81 Sqm (3,400 Sqft)
Max Suite Area: 236.56 Sqm (2,547 Sqft) | **Max Balcony Area:** 92.57 Sqm (996 Sqft) | **Max Total Area:** 329.13 Sqm (3,543 Sqft)

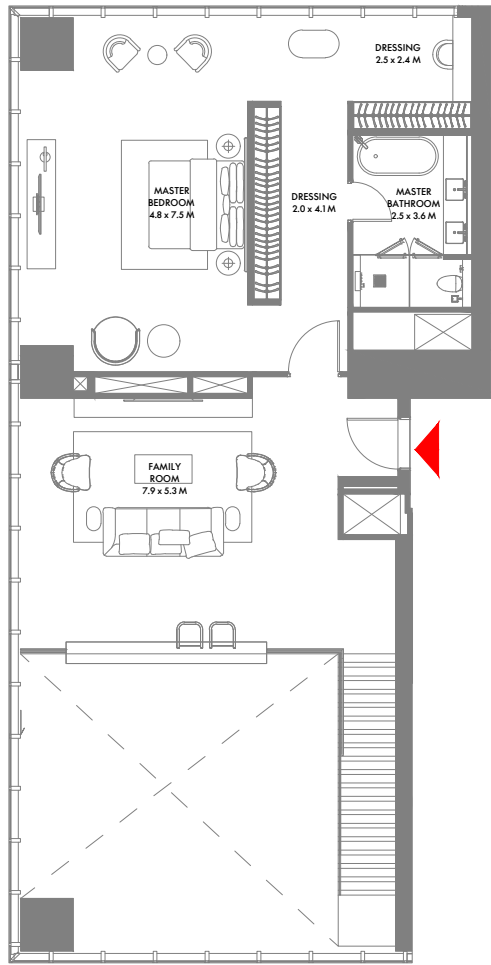
1-Measurements are indicative 'finish to finish' in Metric & Imperial excluding construction tolerance. 2-Plot/unit dimensions may vary from brochure, and unit types/plans may exist as mirrored versions; 3-All images used are for illustrative purposes only. 4-Unless stated otherwise, all fittings and interior decorative items shown are for illustrative purposes only. 5-The developer reserves the right to make alterations, at its absolute discretion, without any liability whatsoever up to the final 'as built' status.



11TH FLOOR



12TH FLOOR



Dubai Harbour Residence
Units Typology



29TH TO 31ST & 33RD TO 36TH FLOOR



3 Bedroom Duplex A

Max Suite Area: 305.51 Sqm (3,289 Sqft) | **Max Balcony Area:** 155.06 Sqm (1,669 Sqft) | **Max Total Area:** 460.57 Sqm (4,958 Sqft)

4 Bedroom A

Max Suite Area: 296.50 Sqm (3,192 Sqft) | **Max Balcony Area:** 105.63 Sqm (1,137 Sqft) | **Max Total Area:** 402.13 Sqm (4,329 Sqft)

1-Measurements are indicative 'finish to finish' in Metric & Imperial excluding construction tolerance. 2-Plot/unit dimensions may vary from brochure, and unit types/plans may exist as mirrored versions; 3-All images used are for illustrative purposes only. 4-Unless stated otherwise, all fittings and interior decorative items shown are for illustrative purposes only. 5-The developer reserves the right to make alterations, at its absolute discretion, without any liability whatsoever up to the final 'as built' status.

1-Measurements are indicative 'finish to finish' in Metric & Imperial excluding construction tolerance. 2-Plot/unit dimensions may vary from brochure, and unit types/plans may exist as mirrored versions; 3-All images used are for illustrative purposes only. 4-Unless stated otherwise, all fittings and interior decorative items shown are for illustrative purposes only. 5-The developer reserves the right to make alterations, at its absolute discretion, without any liability whatsoever up to the final 'as built' status.



4 Bedroom B

Min Suite Area: 240.62 Sqm (2,591 Sqft) | **Min Balcony Area:** 93.63 Sqm (1,007 Sqft) | **Min Total Area:** 334.25 Sqm (3,598 Sqft)
Max Suite Area: 262.26 Sqm (2,823 Sqft) | **Max Balcony Area:** 97.89 Sqm (1,054 Sqft) | **Max Total Area:** 360.15 Sqm (3,877 Sqft)

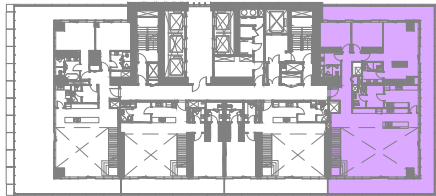
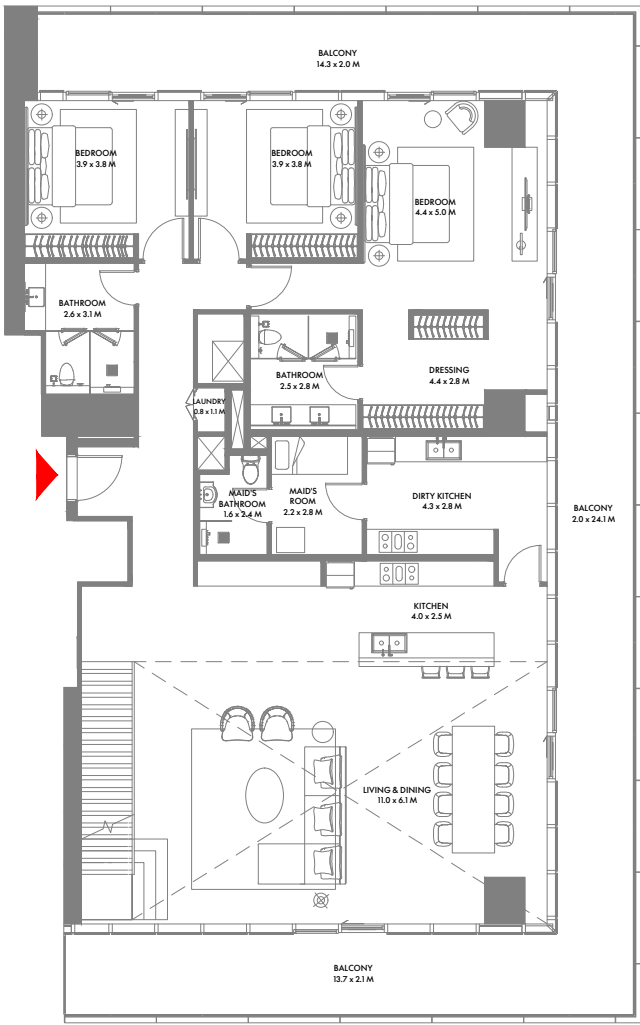
1-Measurements are indicative 'finish to finish' in Metric & Imperial excluding construction tolerance. 2-Plot/unit dimensions may vary from brochure, and unit types/plans may exist as mirrored versions; 3-All images used are for illustrative purposes only. 4-Unless stated otherwise, all fittings and interior decorative items shown are for illustrative purposes only. 5-The developer reserves the right to make alterations, at its absolute discretion, without any liability whatsoever up to the final 'as built' status.



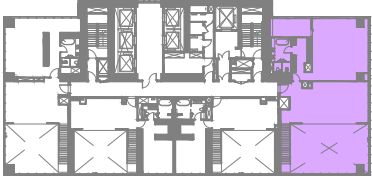
4 Bedroom C

Max Suite Area: 285.27 Sqm (3,071 Sqft) | **Max Balcony Area:** 105.63 Sqm (1,137 Sqft) | **Max Total Area:** 390.90 Sqm (4,208 Sqft)

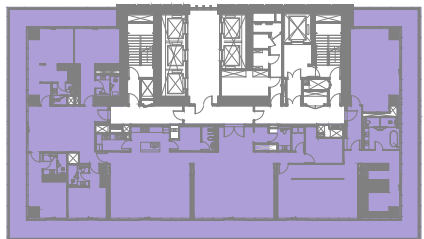
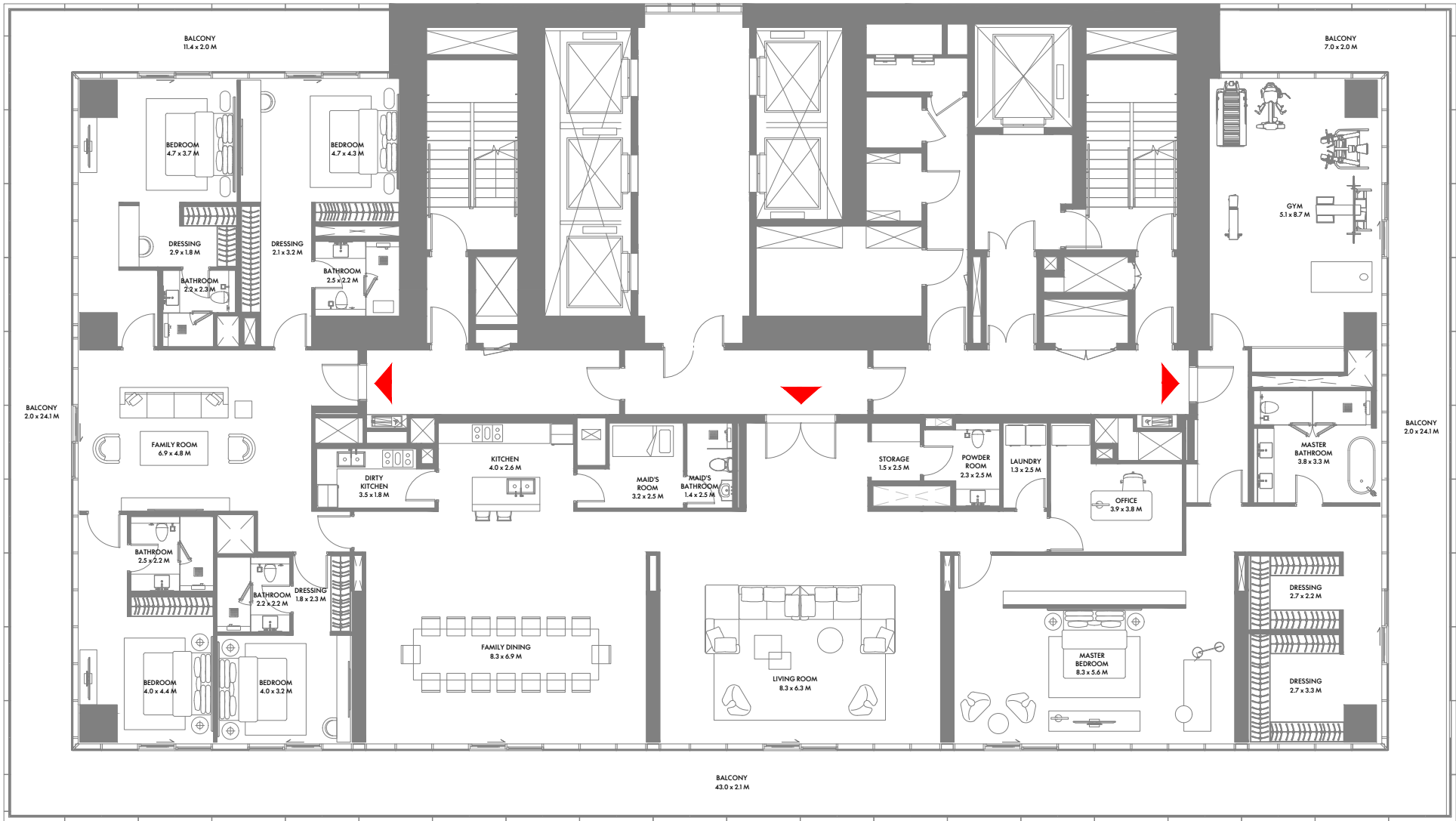
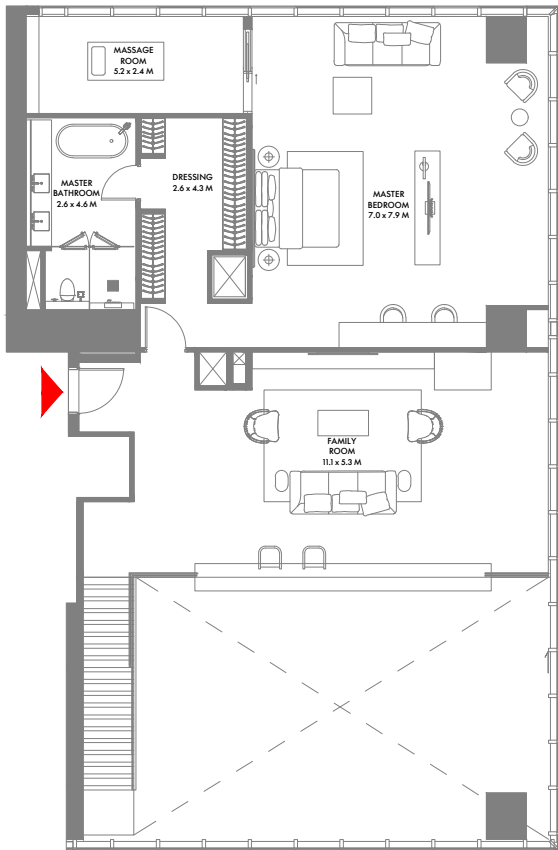
1-Measurements are indicative 'finish to finish' in Metric & Imperial excluding construction tolerance. 2-Plot/unit dimensions may vary from brochure, and unit types/plans may exist as mirrored versions; 3-All images used are for illustrative purposes only. 4-Unless stated otherwise, all fittings and interior decorative items shown are for illustrative purposes only. 5-The developer reserves the right to make alterations, at its absolute discretion, without any liability whatsoever up to the final 'as built' status.



11TH FLOOR



12TH FLOOR



37TH TO 40TH FLOOR

4 Bedroom Duplex A

Max Suite Area: 411.43 Sqm (4,429 Sqft) | **Max Balcony Area:** 91.55 Sqm (986 Sqft) | **Max Total Area:** 502.98 Sqm (5,415 Sqft)

5 Bedroom Penthouse

Min Suite Area: 501.52 Sqm (5,399 Sqft) | **Min Balcony Area:** 192.43 Sqm (2,071 Sqft) | **Min Total Area:** 693.95 Sqm (7,470 Sqft)
Max Suite Area: 517.97 Sqm (5,576 Sqft) | **Max Balcony Area:** 195.62 Sqm (2,106 Sqft) | **Max Total Area:** 713.59 Sqm (7,682 Sqft)

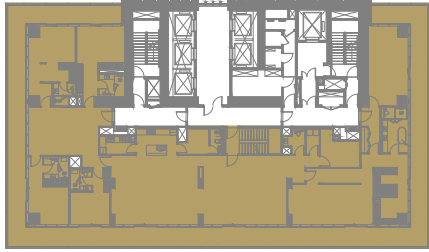
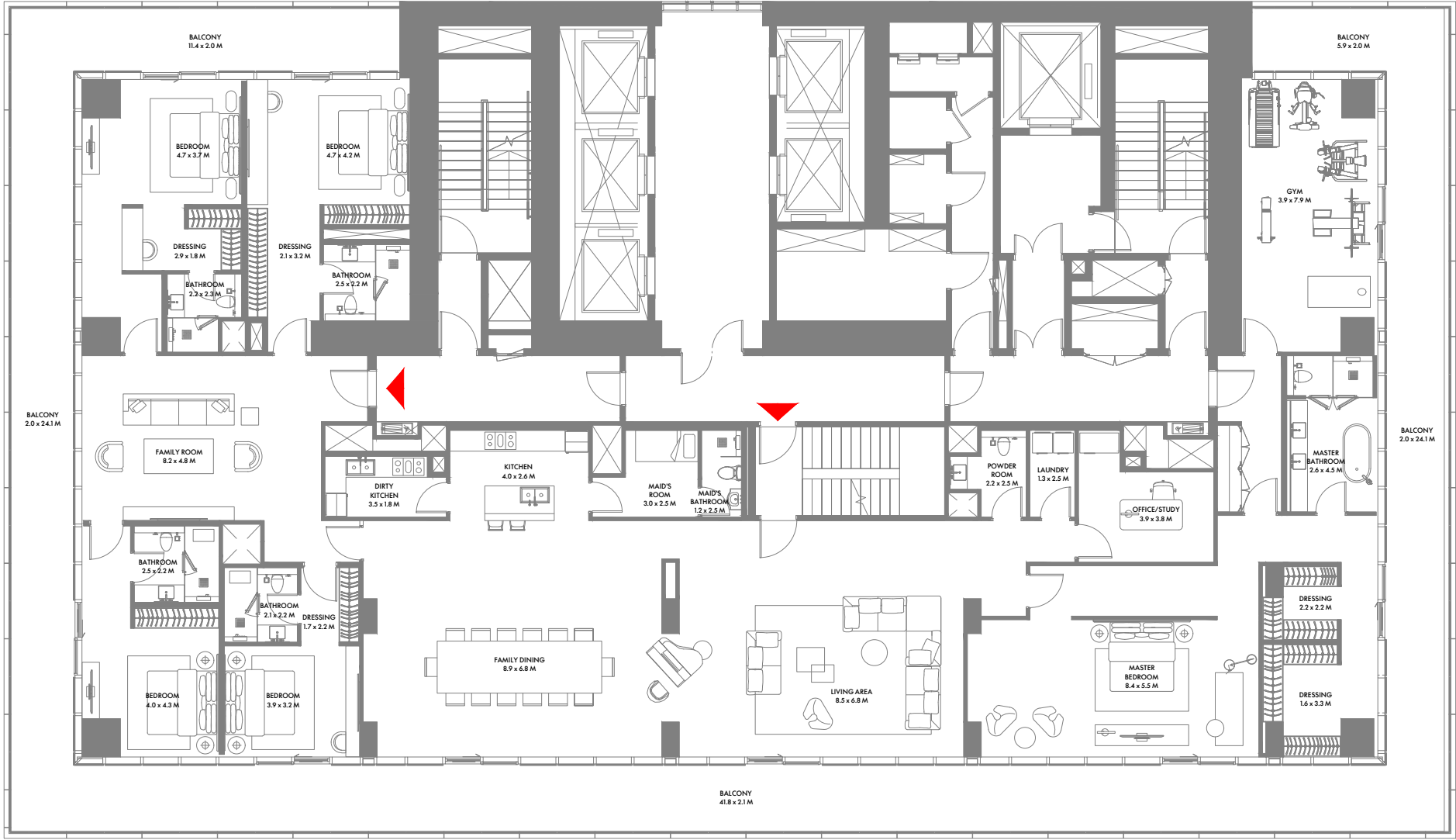
1-Measurements are indicative 'finish to finish' in Metric & Imperial excluding construction tolerance. 2-Plot/unit dimensions may vary from brochure, and unit types/plans may exist as mirrored versions; 3-All images used are for illustrative purposes only. 4-Unless stated otherwise, all fittings and interior decorative items shown are for illustrative purposes only. 5-The developer reserves the right to make alterations, at its absolute discretion, without any liability whatsoever up to the final 'as built' status.

1-Measurements are indicative 'finish to finish' in Metric & Imperial excluding construction tolerance. 2-Plot/unit dimensions may vary from brochure, and unit types/plans may exist as mirrored versions; 3-All images used are for illustrative purposes only. 4-Unless stated otherwise, all fittings and interior decorative items shown are for illustrative purposes only. 5-The developer reserves the right to make alterations, at its absolute discretion, without any liability whatsoever up to the final 'as built' status.



PRESIDENTIAL SUITE





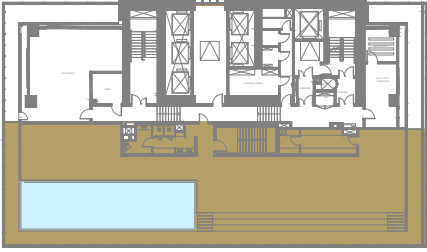
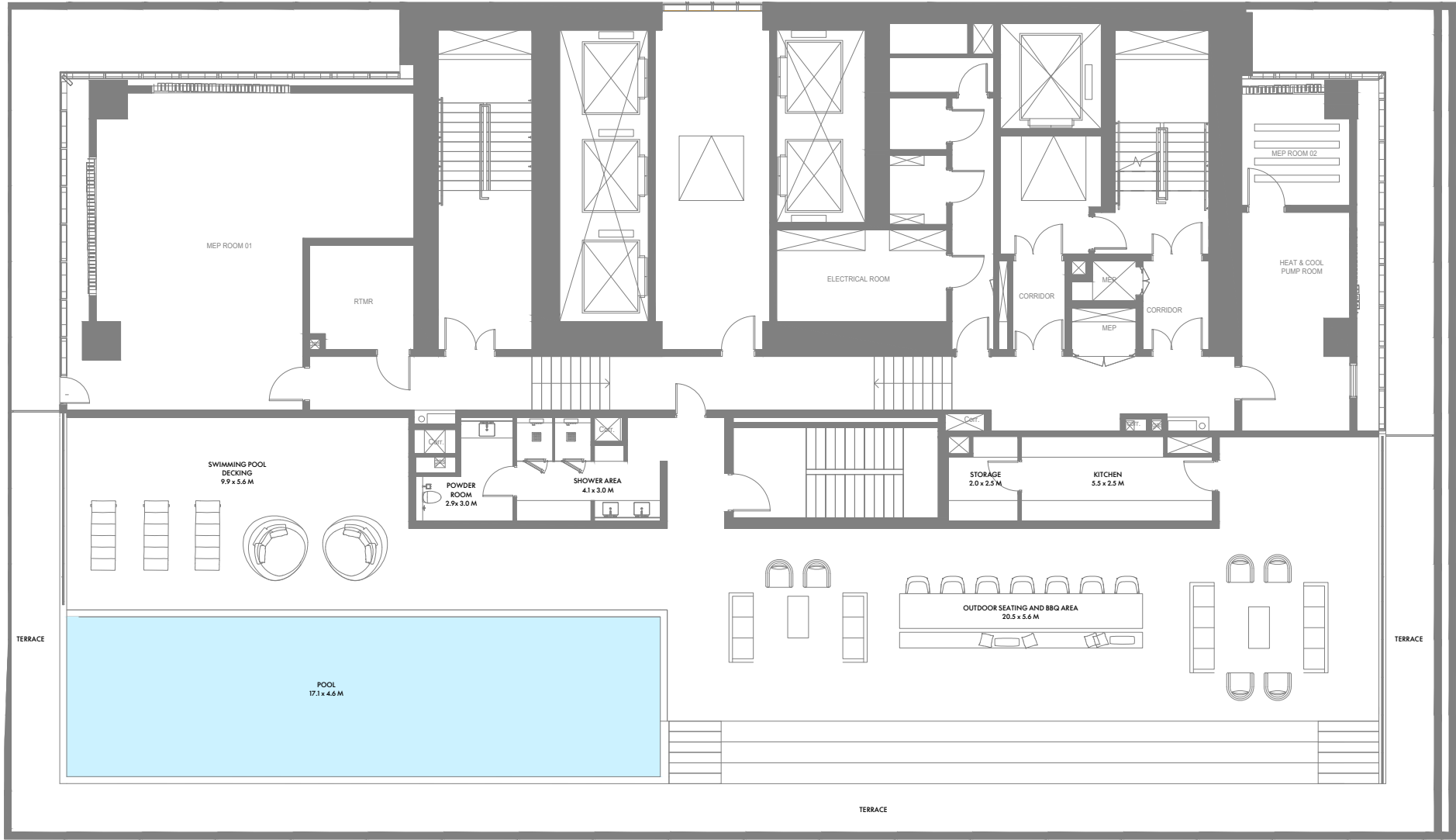
41ST FLOOR

Presidential Suite

Max Suite Area: 690.56 Sqm (7,434 Sqft) | **Max Balcony Area:** 65.66 Sqm (707 Sqft) | **Max Terrace Area:** 415.95 Sqm (4,477 Sqft)

Max Total Area: 1,172.17 Sqm (12,618 Sqft)

1-Measurements are indicative 'finish to finish' in Metric & Imperial excluding construction tolerance. 2-Plot/unit dimensions may vary from brochure, and unit types/plans may exist as mirrored versions; 3-All images used are for illustrative purposes only. 4-Unless stated otherwise, all fittings and interior decorative items shown are for illustrative purposes only. 5-The developer reserves the right to make alterations, at its absolute discretion, without any liability whatsoever up to the final 'as built' status.



ROOF FLOOR

ABOUT ARADA

Launched in 2017 and headquartered in the UAE, Arada was created to build spaces people connect with for healthier, happier and more meaningful lives. Arada's scope of operation covers property development, retail, education and hospitality.

Arada has so far launched eight record-breaking communities across the UAE, as well as expanding internationally into the Australian residential market.



Aljada Discovery Center, Aljada, Sharjah | Masaar Discovery Center, Masaar, Sharjah | Arada HQ: 19th Floor, Festival Tower, Dubai Festival City, Dubai
800-ARADA (27232) | info@arada.com; arada.com; [f](#) [@](#) [x](#) [in](#) [@aradaliving](#)

W Residences Dubai Harbour are not owned, developed or sold by Marriott International, Inc. or its affiliates ("Marriott"). Arada Developments LLC and EGR Group LLC use the W marks under a license from Marriott, which has not confirmed the accuracy of any of the statements or representations made herein.

